

TOYO[®] 世界品牌 全球共享
Worldwide brand global sharing



起重设备产品手册
LIFTING EQUIPMENT PRODUCT MANUALS



运营中心: 广东掌握重工科技有限公司
Operation Center: Guangdong Master Heavy Industry Technology Co., Ltd
生产中心: 河北坤达起重设备有限公司
Production Center: Hebei Kunda Hoisting Equipment Co., Ltd
全球销售中心: 天津坤达起重设备有限公司
Global Sales Center: Tianjin Kunda Hoisting Equipment Co., Ltd

联系电话: 0317-2603586 0317-2603732
Tel: 0086-022-85100278 Mob: 0086-15522182694
企业官网: www.toyo-hoists.com
Website: www.toyo-hoists.com
企业邮箱: sales@toyo-hoists.com
Mail: sales@toyo-hoists.com
生产中心地址: 河北省任丘市胜利路67号
Production Center Address: 67 Shengli Road, Renqiu City, Hebei Province, China
全球销售中心地址: 天津市北辰区双街可信产业园
Global Sales Center Address: Shuangjie Trusted Industrial Park, Beichen District, Tianjin, China

坤达起重设备有限公司
Kunda Hoisting Equipment Co.,Ltd

CONTENTS 目录

企业简介 Company Profile	01	微型卷扬葫芦 GF800A Electric Windlass	11	TY螺旋千斤顶 TY Screw Jack	21	无钢丝绳无织带手摇绞车 Hand winch without steel wire rope or color belt	34
企业资质 Qualification Certification	02	迷你电动卷扬机单孔S型 Mini Electric Wire Winch TY-St	12	TYD螺旋千斤顶 TYD Screw Jack	22	TY附刹车手摇绞盘 TY Brake Hand Winches	35
手拉葫芦KII系列 Manual Chain Hoist KII	03	迷你电动卷扬机单孔M型 Mini Electric Wire Winch TY-M	13	桃型手拉跑车 Economic Manual Geared Trolley	23	TY-CE重型绞盘 TY-CE Hand Winch	36
手扳葫芦C系列 Ratchet Lever Hoist C	04	迷你电动卷扬机单孔T型 Mini Electric Wire Winch TY-T	14	桃型手推跑车 Economic Manual Plain Trolley	24	TYM永磁吊装器 TYM Permanent Magnetic Lifter	37
TX型钢丝绳手扳牵引机 TX Series Wire Rope Pulling Hoist	05	爪式顶 Manual Hydraulic Cylinder with Toe-lift	15	TY-E2型手拉单轨行车 TY-E2 Anti-Collision Manual Geared Trolley	25	L型横吊起重钳 L Horizontal Lifting/Plate Clamp	38
TS型钢丝绳手扳牵引机 TS Series Wire Rope Pulling Hoist	06	低位顶 Hydraulic Jack	16	TY-Y4型手拉单轨行车 TY-Y4 Anti-Collision Manual Geared Trolley	26	PDB型横吊起重钳 PDB Horizontal Lifting/Plate Clamp	39
微型电动葫芦(B)系列 Mini Electric Hoist(B)Series	07	液压起道机 Hydraulic Track Lifting Machine	17	TY-E2型手推单轨行车 TY-E2 Anti-Collision Manual Plain Trolley	27	PDQ型横吊起重钳 PDQ Single-Ply Plate Lifting Clamp	40
微型电动葫芦(L)系列 Mini Electric Hoist(L)Series	08	普通液压千斤顶/立式千斤顶 Hydraulic Bottle Jack, Standard Type	18	TY-Y4型手推单轨行车 TY-Y4 Anti-Collision Manual Plain Trolley	28	QS型双钢板起重钳 QS Double-Ply/Steel Plate Lifting Clamp	41
微型电动葫芦(M)系列 Mini Electric Hoist(M)Series	09	卧式千斤顶 Floor Jack	19	TY-Q1型螺旋夹持器 TY-Q1 Girder Clamp	29	DFQ型翻转起重钳 DFQ Turn Clamp	42
微型悬挂葫芦 GT250A Suspension Hoist	10	机械千斤顶 Mechanical Steel Jack	20	TY-Q4型螺旋夹持器 TY-Q4 Girder Clamp	30	DFM型模锻翻转起重钳 DFM Turn Clamp	42
				TY型多功能日式夹线器 TY Japanese Cable Clamp Wire Rope Grip	31	CD型竖吊起重钳 CD Vertical Lifting/Plate Clamp	43
				TY型美式夹线器 TY American Cable Clamp Wire Rope Grip	31	CDH型竖吊起重钳 CDH Vertical Lifting/Plate Clamp	44
				棘轮日式收线器 Ratchet Wire Rope Cable Hand Puller	32	YQC型油桶钳 YQC Oil Drum Lifting Clamp	45
				铝镁合金导线卡线器 Aluminum & Magnesium Alloy Cable Clamp Wire Rope Grip	33	SL型双链油桶钳 SL Oil Drum Lifting Clamp	45
				双桃地跳卡线器 Easily operated cable clamp Wire Rope Grip	33	JC扁平吊装带 JC Flat Webbing Sling	46
				带钩钢丝绳手摇绞车 Hand winch with hook wire rope	34	JA圆形吊装带 JA Round Webbing Sling	47
				织带手摇绞车 Hand winch with belt	34	捆绑带 Ratchet Tie Down	48

Company Profile 企业简介

Kunda Hoisting Equipment Co., Ltd was established in 1996, is a high-tech enterprise integrating r&d, manufacturing and sales. It is located in renqiu industrial zone in the hinterland of the Beijing-Tianjin-Hebei economic golden triangle. At present, there are more than 360 employees, including 3 senior engineers and 26 technical talents of all kinds, accounting for 19% with college degree or above. The company covers an area of 60,000 square meters and has a total asset of 600 million yuan. The leading products are Mini electric hoist (PA), Chain Block, Ratchet Lever hoist, Electric Chain Hoist, European Type Wire Rope Hoist, Electric Winches and other series of hardware lifting products. In 2006, obtained the product export license, to the current overseas market exported to Australia, the United States, Canada, Russia, Brazil, Mexico, Iran, India, Romania and other countries and regions.

Focusing on the research and development and innovation of lifting equipment, Kunda has obtained two national patents and a famous trademark in Hebei province. Its products have successively obtained China CCC certification, ISO9001, and its main products have passed international CE, GS, PAHs and TUV certification. We have partners all over the world, BOSCH, CINTAS, hapag-lloyd, etc. To provide customers with more safe and efficient, ultra-low noise, value of the lifting equipment, is our eternal pursuit.



TOYO®



Qualification Certification 企业资质

TOYO Internet in April 2017 + new retail conference and new product launch, chain VA type C, micro letter, lever hoist, electric hoist PA type, chain electric hoist (TY1, TY2) is listed on the first batch of products. TOYO products have GS certification and CE certification, and their quality is recognized internationally. In addition, TOYO products also have CNAS certification, CMA metrological certification, CAL quality certification. It has special equipment manufacturing license and special equipment type test certificate issued by national lifting and transportation machinery quality supervision and inspection center.

2017年4月TOYO互联网+新零售发布会暨新产品发布会举行,手拉葫芦KII型、手扳葫芦C型、微型电动葫芦PA型、环链电动葫芦(TY1型、TY2型)首批产品正式上市。TOYO产品拥有GS认证证书和CE认证证书,产品质量受到国际认可。此外,TOYO产品还拥有CNAS认证标识,通过CMA计量认证,CAL质量认证。拥有国家起重运输机械质量监督检验中心颁发的特种设备制造许可证和特种设备型式试验合格证。



坤达起重设备有限公司创建于1996年,是集研发、制造、销售为一体的高新技术型企业,地处京津冀经济金三角腹地任丘工业区。现在职工360余人,其中高级工程师3人,各类技术人才26人,大专以上学历占19%,占地面积6万平方米,总资产6亿元。主导产品为微型电动葫芦、手拉葫芦、手扳葫芦、环链电动葫芦、欧式钢丝绳电动葫芦,电动绞盘等系列五金起重产品,总年产100余万台,成为中国北方最大的起重设备生产企业。2006年,取得产品出口许可证,到目前海外市场远销至澳大利亚、美国、加拿大、俄罗斯、巴西、墨西哥、伊朗、印度、罗马尼亚等多个国家和地区。

坤达专注于起重设备的研发与创新,获得两项国家专利,河北省著名商标,产品先后取得中国CCC认证、ISO9001、主要产品已通过国际CE、GS、PAHs、TUV认证。我们的合作伙伴遍布世界各地, BOSCH, CINTAS, Hapag-Lloyd等。为客户提供更安全高效、超低噪音、超值的起重设备,是我们永远的追求。

Manual Chain Hoist KII Series

TOYO手拉葫芦KII型



● Features产品特点

- 

1 抗外部冲击的齿轮箱和外罩
Gearbox And Cover Resistant To External Impact
- 

2 双制动双止推
Double Breaking And Double Stopping
- 

3 TOYO专用链条
TOYO G80 Special Chain
- 

4 合金钢精锻吊钩
Alloy Steel Precision Forging Hook

● Technical Parameters性能参数表

型号Model	KII 010	KII 015	KII 020	KII 030	KII 030	KII 050	KII 100	KII 200
Capacity (t)载重	1	1.5	2	3	3	5	10	20
Test load(t)试验载荷	1.25	1.87	2.5	3.75	3.75	6.25	12.5	25
Standard lift(m)标准起升高度	3	3	3	3	3	3	3	3
Falls of load chain链条行数	1	1	1	1	2	2	4	8
Load chain size (mm)链条尺寸	6×18	7.1×21	8×24	10×30	7.1×21	10×30	10×30	10×30
Force of full load (N)手拉力	284	308	343	372	343	372	382	382×2
Net weight (kg)净重	11.3	16	17.7	26.6	22.5	37.25	75.5	192
Gross Weight(kg)毛重	11.6	16.3	18.1	22.8	27.4	38.3	78.5	215.5
Packing(L*W*H)(mm)包装尺寸(长*宽*高)	250*170*165	310*210*190	305*200*190	355*245*205	310*240*190	370*290*205	560*450*245	670*430*600

Ratchet Lever Hoist C

TOYO手板葫芦C型



● Features产品特点

- 1 锻造和热处理的带有安全锁扣的负载挂钩。**
Forged and heat treated load hooks with safety latch.
- 2 双爪制动系统，提高了使用安全性和可靠性**
Double pawl brake system, enhanced the use security and the reliability.
- 3 等级80/100负载链选项。**
Grade 80/100 load chain option.
- 4 密封针轴承，手柄力低，效率高。**
Sealed needle bearing, low handle force and more efficient.
- 5 加速器采用热处理合金齿轮**
Accelerators with heat-treated alloy gears

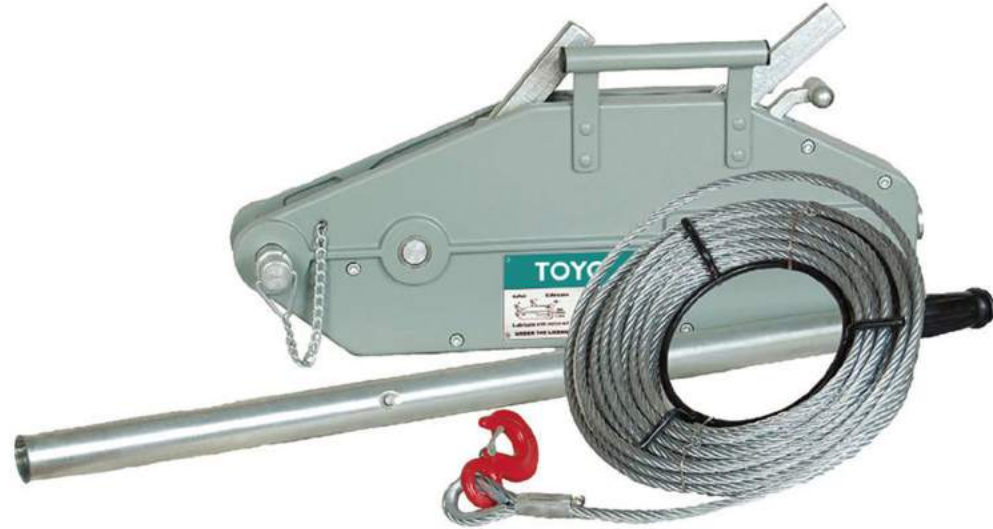


● Technical Parameters性能参数表

Model型号	C080	C160	C320	C630	C900
Rated Load (t)载重	0.8	1.6	3.2	6.3	9
Std Lift (m)标准起升高度	1.5	1.5	1.5	1.5	1.5
Test load (kg)试验载荷	1200	2400	4800	7900	11300
Force of full load (N)手拉力	284	333	363	372	382
Load chain diameter (Φ)起重链条直径	5.6	7.1	10	10	10
Falls of load chain链条行数	1	1	1	2	2
Net weight (kg)净重	5.7	8	15	26	40
Shipping weight (kg)毛重	6	8.3	16	27	42
Weight for additional/M (kg) 每提升1米增加重量	0.7	1.1	2.3	4.7	7
Dimensions (mm)主要尺寸	a	144	159	190	190
	b	119	126	159	217
	c	280	335	395	540
	d	245	265	415	415
	e	97	100	112	112
	g	23.5	32	39	50
	s	35.5	42.5	50	60
	t	14	19	24.5	34

TX wire rope wrench tractor (aluminium alloy)

TOYO TX型钢丝绳手扳牵引机(铝合金)



● Features产品特点

- ① 安全可靠，经久耐用。
Safe and reliable, durable.
- ② 性能好，维修简便。
Good performance and easy maintenance.
- ③ 体积小，重量轻，携带方便
Small size, light weight, easy to carry
- ④ 使用寿命长，动力消耗少，钢丝绳磨损小。
Long service life, less power consumption, less wear and tear of wire rope.

● Technical Parameters性能参数表

Model模型		TX800	TX1600	TX3200	TX5400
Rated Load (t)额定载荷		0.8	1.6	3.2	5.4
Pulling Capacity (t)牵引能力		1.2	2.4	4	8
Pulling force of rated load (N)额定载荷拉力		341	400	438	850
Rope Diameter (mm)钢丝绳直径		8.3	11	16	20
Rated forward travel(mm)额定前进行程		≥52	≥55	≥28	≥25
Wire Rope Safety Factor Load Capacity钢丝绳安全系数承载能力		5	5	5	5
Safety factor & static Load capacity安全系数和静载能力		4	4	4	4
Max. Traveling load (kg)最大移动LOA		1.2	2.4	4	8.1
Size (mm)尺寸	A	426	545	660	Size (mm)
	B	238	284	325	
	C	64	97	116	
Net/Gross Weight (kg)净重/毛重		6.4	12	23	56
Handle length (mm) 手柄长度	L1		692	692	Handle length (mm)
	L2		1200	1200	
	L3	800			

TS type wire rope wrench tractor

TOYO TS型钢丝绳手扳牵引机



● Features产品特点

- ① 安全可靠，经久耐用。
Safe and reliable, durable.
- ② 性能好，维修简便。
Good performance and easy maintenance.
- ③ 体积小，重量轻，携带方便
Small size, light weight, easy to carry
- ④ 使用寿命长，动力消耗少，钢丝绳磨损小。
Long service life, less power consumption, less wear and tear of wire rope.

Model模型		TK800	TK1600	TK3200
Rated Load (t)额定载荷		0.8	1.6	3.2
Pulling Capacity (t)牵引能力		1.2	2.4	4
Pulling force of rated load (N)额定载荷拉力		341	400	438
Rope Diameter (mm)钢丝绳直径		8.3	11	16
Rated forward travel(mm)额定前进行程		≥52	≥55	≥28
Wire Rope Safety Factor Load Capacity钢丝绳安全系数承载能力		5	5	5
Safety factor & static Load capacity安全系数和静载能力		4	4	4
Max. Traveling load (kg)最大移动LOA		1.2	2.4	4
Size (mm)尺寸	A	426	545	660
	B	238	284	325
	C	64	97	116
Net/Gross Weight (kg)净重/毛重		6.4	12	23
Handle length (mm) 手柄长度	L1		692	692
	L2		1200	1200
	L3	800		

Mini Electric Hoist(B)Series

微型电动葫芦 (B) 系列

● Features产品特点



- 1 采用铜电机，具有良好的导电性和绝缘性**
With copper motor, it has good conductivity and insulation.
- 2 高精度设计的减速箱齿轮大大降低了工作噪音**
High precision design reducer gears greatly reduce working noise
- 3 ABS塑料的配件具有防油、防腐、安全的特点**
ABS plastic accessories are oil-proof, anticorrosive and safe



● Technical Parameters性能参数表

Model 型号	Method of Use 使用方法	Rated Volt(v) 额定电压	Input Power (w) 输入功率	Rated Capacity (kg) 额定容量	Lifting Speed (m) 提升速度	Lifting Height (m) 起升高度	Qty/CTN (pcs) 数量/箱	Packing Size(mm) 包装尺寸	G.W/N.W (KG) 总宽/净宽																																																																																																																
PA200	Single-Hook单钩	AC 220/230V 50/60Hz	480	100	10	12	2	38×32×25	22.5/22																																																																																																																
	Double-Hook双钩			200	5	6				PA250	Single-Hook单钩	510	125	10	12	1	54×25×32	32/31	Double-Hook双钩	250	5	6	PA300	Single-Hook单钩	600	150	10	12	1	54×25×32	32/31	Double-Hook双钩	300	5	6	PA400	Single-Hook单钩	950	200	10	12	1	54×25×32	32/31	Double-Hook双钩	400	5	6	PA500	Single-Hook单钩	1020	250	10	12	1	54×25×32	32/31	Double-Hook双钩	500	5	6	PA600	Single-Hook单钩	1200	300	10	12	1	54×25×32	32/31	Double-Hook双钩	600	5	6	PA800	Single-Hook单钩	1300	400	8	12	1	54×25×32	32/31	Double-Hook双钩	800	4	6	PA1000	Single-Hook单钩	1600	500	8	12	1	54×25×32	32/31	Double-Hook双钩	1000	4	6																					
PA250	Single-Hook单钩		510	125	10	12					1		54×25×32	32/31																																																																																																											
	Double-Hook双钩			250	5	6				PA300		Single-Hook单钩			600				150	10	12	1	54×25×32	32/31	Double-Hook双钩	300	5	6				PA400	Single-Hook单钩	950	200	10	12	1	54×25×32	32/31	Double-Hook双钩				400	5	6	PA500	Single-Hook单钩	1020	250	10	12	1				54×25×32	32/31	Double-Hook双钩	500	5	6	PA600	Single-Hook单钩	1200	300				10	12	1	54×25×32	32/31	Double-Hook双钩	600	5	6	PA800				Single-Hook单钩	1300	400	8	12	1	54×25×32	32/31	Double-Hook双钩	800				4	6	PA1000	Single-Hook单钩	1600	500	8	12	1	54×25×32	32/31	Double-Hook双钩	1000	4	6										
PA300	Single-Hook单钩		600	150	10	12						1							54×25×32	32/31																																																																																																					
	Double-Hook双钩			300	5	6				PA400					Single-Hook单钩						950				200	10	12	1				54×25×32	32/31	Double-Hook双钩	400	5	6				PA500				Single-Hook单钩	1020	250	10	12	1	54×25×32	32/31	Double-Hook双钩							500	5	6	PA600	Single-Hook单钩	1200	300	10				12	1				54×25×32	32/31	Double-Hook双钩	600	5				6	PA800	Single-Hook单钩	1300	400				8	12				1	54×25×32	32/31	Double-Hook双钩	800	4	6	PA1000				Single-Hook单钩	1600	500	8	12	1	54×25×32	32/31	Double-Hook双钩	1000	4	6		
PA400	Single-Hook单钩		950	200	10	12	1	54×25×32	32/31																																																																																																																
	Double-Hook双钩			400	5	6				PA500					Single-Hook单钩						1020				250	10	12							1	54×25×32	32/31	Double-Hook双钩				500				5	6	PA600	Single-Hook单钩	1200				300							10	12	1	54×25×32	32/31	Double-Hook双钩	600	5				6							PA800	Single-Hook单钩	1300				400	8	12	1	54×25×32				32/31	Double-Hook双钩							800	4	6	PA1000	Single-Hook单钩				1600	500	8	12	1				54×25×32	32/31	Double-Hook双钩	1000	4	6
PA500	Single-Hook单钩		1020	250	10	12									1										54×25×32	32/31																																																																																															
	Double-Hook双钩			500	5	6				PA600											Single-Hook单钩						1200										300				10				12	1	54×25×32	32/31	Double-Hook双钩				600							5	6				PA800	Single-Hook单钩	1300				400							8	12	1				54×25×32	32/31	Double-Hook双钩							800							4	6	PA1000	Single-Hook单钩	1600				500	8	12	1							54×25×32	32/31	Double-Hook双钩	1000
PA600	Single-Hook单钩		1200	300	10	12															1																54×25×32				32/31																																																																																
	Double-Hook双钩			600	5	6				PA800																	Single-Hook单钩																		1300				400				8							12	1				54×25×32	32/31	Double-Hook双钩				800							4	6							PA1000							Single-Hook单钩							1600	500	8	12	1				54×25×32	32/31	Double-Hook双钩										1000	4
PA800	Single-Hook单钩		1300	400	8	12																					1																						54×25×32				32/31																																																																				
	Double-Hook双钩			800	4	6				PA1000						Single-Hook单钩	1600	500											8	12	1											54×25×32	32/31	Double-Hook双钩	1000										4	6																																																																	
PA1000	Single-Hook单钩		1600	500	8	12					1		54×25×32	32/31																																																																																																											
	Double-Hook双钩			1000	4	6																																																																																																																			

Mini Electric Hoist(L)Series

微型电动葫芦 (L) 系列

1-20t

● Features产品特点



- 1 采用铜电机，具有良好的导电性和绝缘性**
With copper motor, it has good conductivity and insulation.
- 2 防护等级IP54**
SProtection Level IP54
- 3 ABS塑料的配件具有防油、防腐、安全的特点**
ABS plastic accessories are oil-proof, anticorrosive and safe



● Technical Parameters性能参数表

Model 型号	Method of Use 使用方法	Rated Volt(v) 额定电压	Input Power (w) 输入功率	Rated Capacity (kg) 额定容量	Lifting Speed (m) 提升速度	Lifting Height (m) 起升高度	Qty/CTN (pcs) 数量/箱	Packing Size(mm) 包装尺寸	G.W/N.W (KG) 总宽/净宽																																																																																																																
PA200L	Single-Hook单钩	AC 110/120V 50/60Hz	480	100	10	12	2	38×32×25	22.5/22																																																																																																																
	Double-Hook双钩			200	5	6				PA250L	Single-Hook单钩	510	125	10	12	1	54×25×32	32/31	Double-Hook双钩	250	5	6	PA300L	Single-Hook单钩	600	150	10	12	1	54×25×32	32/31	Double-Hook双钩	300	5	6	PA400L	Single-Hook单钩	950	200	10	12	1	54×25×32	32/31	Double-Hook双钩	400	5	6	PA500L	Single-Hook单钩	1020	250	10	12	1	54×25×32	32/31	Double-Hook双钩	500	5	6	PA600L	Single-Hook单钩	1200	300	10	12	1	54×25×32	32/31	Double-Hook双钩	600	5	6	PA800L	Single-Hook单钩	1300	400	8	12	1	54×25×32	32/31	Double-Hook双钩	800	4	6	PA1000 L	Single-Hook单钩	1600	500	8	12	1	54×25×32	32/31	Double-Hook双钩	1000	4	6																					
PA250L	Single-Hook单钩		510	125	10	12					1		54×25×32	32/31																																																																																																											
	Double-Hook双钩			250	5	6				PA300L		Single-Hook单钩			600				150	10	12	1	54×25×32	32/31	Double-Hook双钩	300	5	6				PA400L	Single-Hook单钩	950	200	10	12	1	54×25×32	32/31	Double-Hook双钩				400	5	6	PA500L	Single-Hook单钩	1020	250	10	12	1				54×25×32	32/31	Double-Hook双钩	500	5	6	PA600L	Single-Hook单钩	1200	300				10	12	1	54×25×32	32/31	Double-Hook双钩	600	5	6	PA800L				Single-Hook单钩	1300	400	8	12	1	54×25×32	32/31	Double-Hook双钩	800				4	6	PA1000 L	Single-Hook单钩	1600	500	8	12	1	54×25×32	32/31	Double-Hook双钩	1000	4	6										
PA300L	Single-Hook单钩		600	150	10	12						1							54×25×32	32/31																																																																																																					
	Double-Hook双钩			300	5	6				PA400L					Single-Hook单钩						950				200	10	12	1				54×25×32	32/31	Double-Hook双钩	400	5	6				PA500L				Single-Hook单钩	1020	250	10	12	1	54×25×32	32/31	Double-Hook双钩							500	5	6	PA600L	Single-Hook单钩	1200	300	10				12	1				54×25×32	32/31	Double-Hook双钩	600	5				6	PA800L	Single-Hook单钩	1300	400				8	12				1	54×25×32	32/31	Double-Hook双钩	800	4	6	PA1000 L				Single-Hook单钩	1600	500	8	12	1	54×25×32	32/31	Double-Hook双钩	1000	4	6		
PA400L	Single-Hook单钩		950	200	10	12	1	54×25×32	32/31																																																																																																																
	Double-Hook双钩			400	5	6				PA500L					Single-Hook单钩						1020				250	10	12							1	54×25×32	32/31	Double-Hook双钩				500				5	6	PA600L	Single-Hook单钩	1200				300							10	12	1	54×25×32	32/31	Double-Hook双钩	600	5				6							PA800L	Single-Hook单钩	1300				400	8	12	1	54×25×32				32/31	Double-Hook双钩							800	4	6	PA1000 L	Single-Hook单钩				1600	500	8	12	1				54×25×32	32/31	Double-Hook双钩	1000	4	6
PA500L	Single-Hook单钩		1020	250	10	12									1										54×25×32	32/31																																																																																															
	Double-Hook双钩			500	5	6				PA600L											Single-Hook单钩						1200										300				10				12	1	54×25×32	32/31	Double-Hook双钩				600							5	6				PA800L	Single-Hook单钩	1300				400							8	12	1				54×25×32	32/31	Double-Hook双钩							800							4	6	PA1000 L	Single-Hook单钩	1600				500	8	12	1							54×25×32	32/31	Double-Hook双钩	1000
PA600L	Single-Hook单钩		1200	300	10	12															1																54×25×32				32/31																																																																																
	Double-Hook双钩			600	5	6				PA800L																	Single-Hook单钩																		1300				400				8							12	1				54×25×32	32/31	Double-Hook双钩				800							4	6							PA1000 L							Single-Hook单钩							1600	500	8	12	1				54×25×32	32/31	Double-Hook双钩										1000	4
PA800L	Single-Hook单钩		1300	400	8	12																					1																						54×25×32				32/31																																																																				
	Double-Hook双钩			800	4	6				PA1000 L						Single-Hook单钩	1600	500											8	12	1											54×25×32	32/31	Double-Hook双钩	1000										4	6																																																																	
PA1000 L	Single-Hook单钩		1600	500	8	12					1		54×25×32	32/31																																																																																																											
	Double-Hook双钩			1000	4	6																																																																																																																			

Mini Electric Hoist(M)Series

微型电动葫芦 (M) 系列

● Features产品特点



- ① **采用铜电机，具有良好的导电性和绝缘性**
With copper motor, it has good conductivity and insulation.
- ② **防护等级IP54**
SProtection Level IP54
- ③ **ABS塑料的配件具有防油、防腐、安全的特点**
ABS plastic accessories are oil-proof, anticorrosive and safe



● Technical Parameters性能参数表

Model 型号	Method of Use 使用方法	Rated Volt(v) 额定电压	Input Power (w) 输入功率	Rated Capacity (kg) 额定容量	Lifting Speed (m) 提升速度	Lifting Height (m) 起升高度	Qty/CTN (pcs) 数量/箱	Packing Size(mm) 包装尺寸	G.W/N.W (KG) 总宽/净宽	
PA200M	Single-Hook单钩	AC 220/230V 50/60Hz	480	100	10	12	2	38×32×25	22.5/22	
	Double-Hook双钩			200	5	6				
PA250M	Single-Hook单钩		510	125	10	12				
	Double-Hook双钩			250	5	6				
PA300M	Single-Hook单钩		600	600	150	10				12
	Double-Hook双钩				300	5				6
PA400M	Single-Hook单钩		950	950	200	10	12			
	Double-Hook双钩				400	5	6			
PA500M	Single-Hook单钩		1020	1020	250	10	12	1	54×25×32	32/31
	Double-Hook双钩				500	5	6			
PA600M	Single-Hook单钩		1200	1200	300	10	12			
	Double-Hook双钩				600	5	6			
PA800M	Single-Hook单钩		1300	1300	400	8	12			
	Double-Hook双钩				800	4	6			
PA1000M	Single-Hook单钩	1600	1600	500	8	12				
	Double-Hook双钩			1000	4	6				

GT250A Suspension Hoist

TOYO GT250A悬挂起重机

● Features产品特点



- ① **纯铜线，散热快，电机工作效率高，省力。**
Pure copper wire, fast heat dissipation, high efficiency of motor, labor saving.
- ② **铝制外壳，外形美观，重量轻，噪音低，**
Aluminum shell, beautiful appearance, light weight, low noise,
- ③ **实心钢丝绳，坚固耐磨,不易卷曲变形，不仅坚硬，其耐腐蚀性和耐磨性也很强。**
Solid wire rope, strong wear resistance, not easy to curl deformation, not only hard, its corrosion resistance and wear resistance is also strong.
- ④ **舒适的操作手柄,人体工学设计，手感舒适，厚实耐磨，安全稳定。**
Comfortable operation handle, ergonomic design, comfortable feel, thick and wear-resistant, safe and stable.

● Technical Parameters性能参数表

型号	GT250A
Voltage (A) 电压	5.7
Input power (W) 输入功率	1300
Rated load (kg) 额定载重	250
Elevation of height (M)提升高度	60
Increasing speed (m/min) 提升速度	15
Wire rope diameter (MM)钢丝绳直径	5.1
Breaking Force of Wire Rope (N/M2)钢丝绳破断力	> 1870
Insulation Grade绝缘等级	Ip54
Work efficiency工作效率	S3 40%-10min
mechanism机制	M1
Suggested Diameter of Circular Beam (mm) 建议圆梁直径	40-50
Net weight (kg) 净重	31

GF800A Electric Windlass

TOYO GF800A 电动起锚机



Features 产品特点

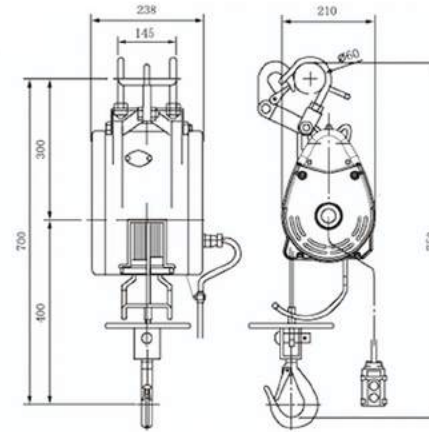
- ① **纯铜线，散热快，电机工作效率高，省力。**
Pure copper wire, fast heat dissipation, high efficiency of motor, labor saving.
- ② **铝制外壳，外形美观，重量轻，噪音低，**
Aluminum shell, beautiful appearance, light weight, low noise,
- ③ **实心钢丝绳，坚固耐磨，不易卷曲变形，不仅坚硬，其耐腐蚀性和耐磨性也很强。**
Solid wire rope, strong wear resistance, not easy to curl deformation, not only hard, its corrosion resistance and wear resistance is also strong.
- ④ **舒适的操作手柄，人体工学设计，手感舒适，厚实耐磨，安全稳定。**
Comfortable operation handle, ergonomic design, comfortable feel, thick and wear-resistant, safe and stable.

Technical Parameters 性能参数表

Model	GF800A
Voltage	230V 50HZ
Input Power(w)	1600
Capacity (kg)	800
Lifting Height (m)	20
Lifting Speed (m/min)	9
Wire Diameter (mm)	6
Breaking Strength (N/M ²)	>1870
Insulation Grade	B
Protection Grade	IP54

Mini Electric Wire Winches S Series

迷你电动卷扬机单孔 S 型



Features 产品特点

S series single hole has only one jack, which is directly connected to the power cord plug. The switch control wire and the power cord are the same circuit.
S系列单孔只有1个插孔，直接连接电源线插头，开关控制线与电源线是同一电路。

1 Motor System 电动机系统

Brushless motor series excited of high efficiency industrial grade; up to 200 degrees enameled heat levels, specially designed for long crane.
采用高效工业级无刷电机系列励磁；它的搪瓷热水平高达200度，专门为长起重机设计。

2 Brake System 制动系统

Dual brake system with one mechanical ratchet gear brakes and the other brake resistor short circuit controller; formula oiled copper disc brakes with high friction coefficient, which needs no adjustment.
双制动系统，一个机械棘轮齿轮制动器和另一个制动电阻短路控制器；涂油铜盘式制动器，摩擦系数高，无需调整；断电或故障时立即刹车。

3 Security System 安全系统

Cable stops automatically over the volume limit; cable stops automatically when inverting.
超过容量限制自动停机；电缆反向时自动停止。

4 Cable Specifications 电缆规格

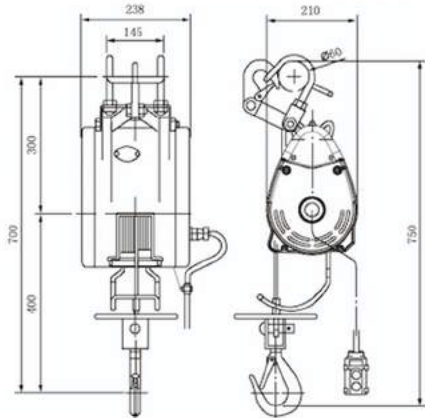
Japan steel wire with 3-fold safety factor.
日本进口钢丝，安全系数为3倍。

Technical Parameters 性能参数表

Model 型号	Capacity (t) 载重	Power (Voltage) 电压		Phase 相数	Wire Rope (mm) 钢丝绳		Wire Rope Lift (m) 提升高度		Speed 速度 (M/min)		Motor (kW) 电机功率
		100-120	200-240		5	4	50Hz	60Hz			
TY-S160	160	100-120	200-240	1	5	4	28	43	19	23	1.2
TY-S180	180	100-120	200-240	1	5	4	28	43	19	23	1.3
TY-S230	230	100-120	200-240	1	5	4	28	43	19	23	1.3
TY-S250	250	100-120	200-240	1	5	4	28	43	19	23	1.5
TY-S300	300	100-120	200-240	1	5	4	28	43	19	23	1.5
TY-S280	280	100-120	200-240	1	5	-	58	-	12	19	1.3
TY-S360	360	100-120	200-240	1	5	-	58	-	12	19	1.5
TY-S500	500	100-120	200-240	1	6	-	30	-	13	20	1.6

Mini Electric Wire Winches M Series

迷你电动卷扬机双孔M系列



● Features产品特点

Add the M series in the control circuit of ac contactor, in the case of voltage instability, also can start the motor running normally, inherit the floating current, and using the electromagnetic suction force on and off.
M系列在控制电路中加了交流接触器,在电压不稳定的情况下,也可正常启动马达运行,承受浮动电流,利用电磁吸合,强行通断。

1 Motor System电动机系统

Brushless motor series excited of high efficiency industrial grade; up to 200 degrees enameled heat levels, specially designed for long crane.
采用高效工业级无刷电机系列励磁;它的搪瓷热水平高达200度,专门为长起重机设计。

2 Brake System制动系统

Dual brake system with one mechanical ratchet gear brakes and the other brake resistor short circuit controller; formula oiled copper disc brakes with high friction coefficient, which needs no adjustment.
双制动系统,一个机械棘轮齿轮制动器和另一个制动电阻短路控制器;涂油铜盘式制动器,摩擦系数高,无需调整;断电或故障时立即刹车。

3 Security System安全系统

Cable stops automatically over the volume limit; cable stops automatically when inverting.
超过容量限制自动停机;电缆反向时自动停止。

4 Cable Specifications电缆规格

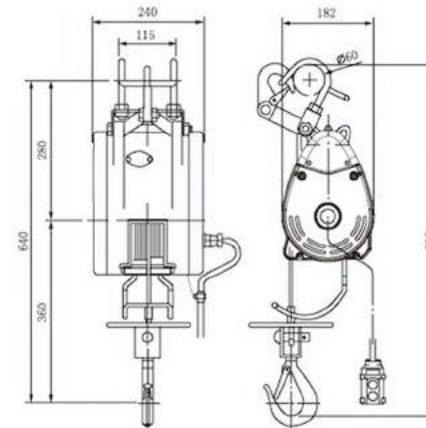
Japan steel wire with 3-fold safety factor.
日本进口钢丝,安全系数为3倍。

● Technical Parameters性能参数表

Model 型号	Capacity (t)载重	Power (Voltage)电压		Phase相数	Wire Rope (mm)钢丝绳		Wire Rope Lift (m)提升高度		Speed 速度 (M/min)		Motor (kW) 电机功率
		100-120	200-240		5	4	28	43	50Hz	60Hz	
TY-M160	160	100-120	200-240	1	5	4	28	43	19	23	1.2
TY-M180	180	100-120	200-240	1	5	4	28	43	19	23	1.3
TY-M230	230	100-120	200-240	1	5	4	28	43	19	23	1.3
TY-M250	250	100-120	200-240	1	5	4	28	43	19	23	1.5
TY-M300	300	100-120	200-240	1	5	4	28	43	19	23	1.5
TY-M280	280	100-120	200-240	1	5	-	58	-	12	19	1.3
TY-M360	360	100-120	200-240	1	5	-	58	-	12	19	1.5
TY-M500	500	100-120	200-240	1	6	-	30	-	13	20	1.6

Mini Electric Wire Winches T Series

迷你电动卷扬机双孔T型



● Features产品特点

T series double hole has 2 jacks, one to connect the power cord, one to connect the switch, the control wire. The power line and the control line are connected separately, which increases the convenience of use. The position of the control switch cable can be moved arbitrarily.
T系列双孔有2个插孔,一个连接电源线,一个连接开关,控制线。电源线与控制线分开插联,增加了使用的便利性,控制开关电缆线的位置任意移。

1 Motor System电动机系统

Brushless motor series excited of high efficiency industrial grade; up to 200 degrees enameled heat levels, specially designed for long crane.
采用高效工业级无刷电机系列励磁;它的搪瓷热水平高达200度,专门为长起重机设计。

2 Brake System制动系统

Dual brake system with one mechanical ratchet gear brakes and the other brake resistor short circuit controller; formula oiled copper disc brakes with high friction coefficient, which needs no adjustment.
双制动系统,一个机械棘轮齿轮制动器和另一个制动电阻短路控制器;涂油铜盘式制动器,摩擦系数高,无需调整;断电或故障时立即刹车。

3 Security System安全系统

Cable stops automatically over the volume limit; cable stops automatically when inverting.
超过容量限制自动停机;电缆反向时自动停止。

4 Cable Specifications电缆规格

Japan steel wire with 3-fold safety factor.
日本进口钢丝,安全系数为3倍。

● Technical Parameters性能参数表

Model 型号	Capacity (t)载重	Power (Voltage)电压		Phase相数	Wire Rope (mm)钢丝绳		Wire Rope Lift (m)提升高度		Speed 速度 (M/min)		Motor (kW) 电机功率
		100-120	200-240		5	4	28	43	50Hz	60Hz	
TY-T160	160	100-120	200-240	1	5	4	28	43	19	23	1.2
TY-T180	180	100-120	200-240	1	5	4	28	43	19	23	1.3
TY-T230	230	100-120	200-240	1	5	4	28	43	19	23	1.3
TY-T250	250	100-120	200-240	1	5	4	28	43	19	23	1.5
TY-T300	300	100-120	200-240	1	5	4	28	43	19	23	1.5
TY-T280	280	100-120	200-240	1	5	-	58	-	12	19	1.3
TY-T360	360	100-120	200-240	1	5	-	58	-	12	19	1.5
TY-T500	500	100-120	200-240	1	6	-	30	-	13	20	1.6

Manual Hydraulic Cylinder with Toe-lift

千斤顶液压跨顶系列 (爪式顶)



Applications 产品应用

Widely used in mechanical equipment, bridge construction, railway track and other aspects of the installation and maintenance, transportation heavy loading and unloading, car tractor repair.

广泛适用于机械设备、桥梁建筑、铁路轨道等方面的安装和维修，交通运输的重物装卸，汽车拖拉机的修理方面。

Features 产品特点

- 1 符合美国安全标准:ASME B30.1
In compliance with U.S. safety standards: ASME B30.1
- 2 起重设备使用在最小可达空间
Lifting equipment used in the minimum accessible space.
- 3 低高度现象
Low height foot-lifting.
- 4 能在顶部和底部同时举起
Able to lift both at top and in the bottom.
- 5 精确定位，避免液压缸在侧负荷下工作
Precision-oriented to avoid the hydraulic cylinder under side load.
- 6 用弹簧复位5吨，10吨
With a reset spring for 5 tons, 10 tons

Technical Parameters 性能参数表

Model 型号	Capacity (t) 载重	Head Capacity(t) 顶部载重	Min.toe Height (cm) 爪最低位置	Max.toe Height (cm) 爪最高位置	Min.Head Height (cm) 顶部最低位置	Max.Head Height (cm) 顶部最高位置	Packing size (mm) 包装尺寸	Net Weight (kg) 净重
TY1102	5	2.5	16	130	235	362	215X160X260mm	10
TY1105	10	5	25	148	295	418	305X220X320mm	24
TY1110	20	10	32	173	330	471	325X275X355mm	38
TY1115	30	15	32	200	345	520	330X280X360mm	48
TY1125	50	25	40	160	390	520	395X300X420mm	80

Hydraulic Jack

液压跨顶系列低位顶



Warning 警告

- 1 避免可能的人身伤害或设备损坏
To avoid possible personal injury or damage to equipment
- 2 不要超过千斤顶的最大承载能力。
Do not exceed the maximum load capacity of the jack.
- 3 不稳定的负载可能导致千斤顶或负载滑移。
An unstable load may cause the jack or load slip.
- 4 不要向提升的负载添加额外的负载。
Do not add additional load to a lifted load.
- 5 如有损坏、改变或状况欠佳，切勿使用千斤顶。
Do not use jack(s) if damaged, altered or in poor condition.
- 6 不要在不稳定或危险的位置使用。
Do not use in unstable or hazardous position.
- 7 不要把人抬起来，也不要带着人抬东西。
Do not lift people or loads with people on them.
- 8 机组必须使用在能够承受载荷的平面上。
Unit must be used on flat surfaces able on carry the load.
- 9 不要抬起脚尖。充分利用脚趾的负荷。
Do not lift at the end of the toe. Fully engage the load with the toe.
- 10 起吊时载荷必须稳定。
The load must be stable during lifting.

Technical Parameters 性能参数表

Model 型号	Rated lifting Capacity(t) 提升载重	Min.toe Height(mm) 最低高度	Lifting stroke (mm) 行程	N.W./G.W.(kg) 重量	Packing size(mm) 包装尺寸
TY1305	5	25	230	21	365x200x430
TY1310	10	30	260	30	380x225x485
TY1325	25	58	273	101	540x320x615

Hydraulic Track Lifting Machine

液压起道机



● Applications 产品应用

Hydraulic track lifter is a special equipment for track lifter and track shifter maintenance of railway lines, which is suitable for track lifter and track shifter operation of rail lines with 43kg/m ~ 75kg/m. With high efficiency, simple operation, light, reduce physical labor, safe and reliable, wide range of application and other characteristics.

液压起道机是铁路线路大、中修及道床维护的起道、拨道专用设备，适用于43kg/m~75kg/m钢轨线路起道、拨道作业，既能抬高又能调整轨道水平作业。具有工作效率高，操作简单、轻便，减轻体力劳动，安全可靠、适用范围广等特点。

● Machine maintenance 机器保养

1 为了确保机器在每次使用时灵活可靠，必须对机器进行有效的保养和周期检查。

In order to ensure the flexibility and reliability of the machine during each use, effective maintenance and periodic inspection must be carried out on the machine.

2 必须保证机器滑动部分和裸露活动元件不锈蚀，用完必须上好机油，如使用间隔期较长，则必须上防锈油，不要将机器摔、磕、碰伤，以保证机器活动精度。

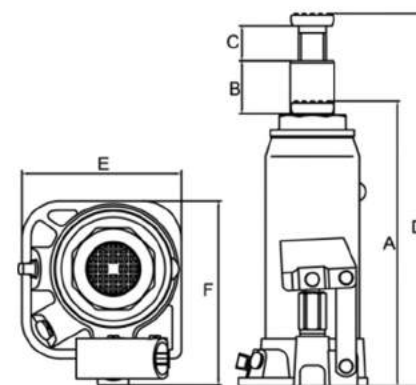
The sliding part of the machine and the exposed moving elements must not be corroded. The machine must have a good oil after use.

● Technical Parameters 性能参数表

Model 型号	Capacity(t) 载重	Body Height(mm) 机身高度	Maximum stroke (mm) 最高高度	G.W.(kg) 毛重	N.W.(kg) 净重	Packing size(mm) 包装尺寸
AYA10	10	401	200	24	22.5	300x197x507

Hydraulic Bottle Jack, Standard Type

立式普通液压千斤顶



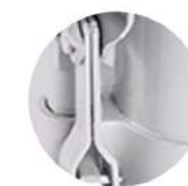
● Features 产品特点



1 "Corn" Anti-Slip Head “玉米” 凸起防打滑
Non-slip head with a unique corn grain shape for safer and more secure use
防滑头，独特的玉米颗粒形状，使用更安全



2 Smooth Piston Rod 活塞杆光滑
Smooth piston rod, precision polished and longer service life
活塞杆光滑，精密抛光，使用寿命更长



3 Precision Pump Core 精密泵芯
Precision machining of the pump core, smooth and meticulous, and more labor-saving
泵芯精密加工，光滑细致，更省力



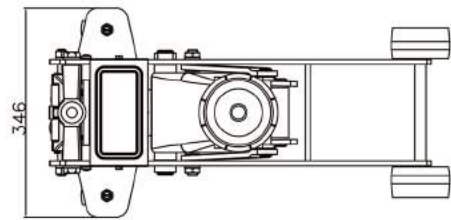
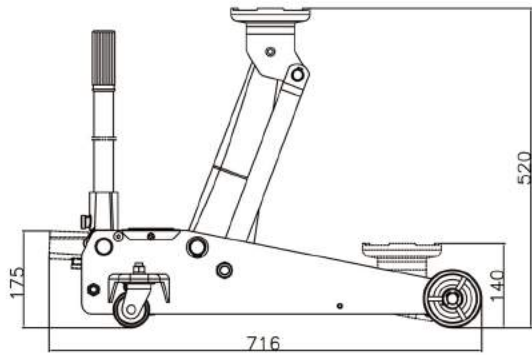
4 Fine Internal Process 内部工艺精细
Fine internal process, internal oil circuit, fine production, safe and reliable
内部工艺精细，内部油路，生产精细，安全可靠

● Technical Parameters 性能参数表

Model 型号	Loading Capacity (T) 额定重量	Minimum Height(mm) 最低起升高度	Lifting Height (mm) 起升高度	Adjust Height (mm) 调整高度	Maximum Height (mm) 最高高度	Maximum Height (mm) 最高高度					
						A(mm)	B(mm)	C(mm)	D(mm)	E(mm)	F(mm)
VJ-020	2	181	116	48	345	181	116	48	345	88	92
VJ-030	3	194	118	60	372	194	118	60	372	92	100
VJ-050	5	216	127	70	413	216	126	70	413	96	112
VJ-080	8	230	147	80	457	230	147	80	457	103	118
VJ-100	10	230	150	80	460	230	150	80	460	110	123
VJ-120	12	230	155	80	465	230	155	80	465	116	134
VJ-160	16	230	150	80	460	230	150	80	460	133	136
VJ-200	20	242	150	60	452	242	150	60	452	144	152
VJ-320	32	260	155	/	415	285	180	/	465	152	195
VJ-500	50	270	160	/	430	300	180	/	480	176	225

Floor Jack

卧式千斤顶



Features产品特点

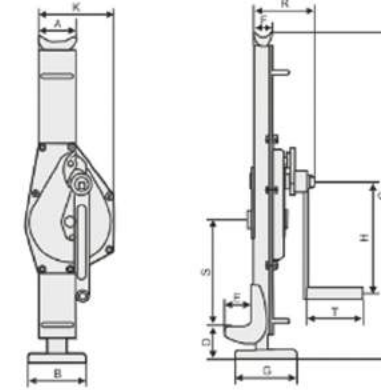
- 油缸采用Y型聚氨酯密封，耐磨性好防低压泄漏**
The oil cylinder is sealed with Y type polyurethane seal, which can resist low pressure leakage
- 整体结构稳定可靠，移动灵活**
The whole structure is stable and reliable with flexible movement
- 高扬程设计，适用于各种车型**
High lift design, suitable for various models
- 安全阀设计，防止过载，确保安全**
Safety valve is designed to prevent overload and ensure safety
- 双泵快速提升，使用高效**
Double pumps lift up quickly and operate efficiently
- 万向后轮，移动方便**
Universal rear wheel, easy to move

Technical Parameters性能参数表

Model 型号	Loading Capacity (T) 额定重量	Minimum Height(mm) 最低起升高度	Maximum Height (mm) 最高高度	Net Weight(kg) 净重	Packing size(mm) 包装尺寸
HJ-020	2	85	330	11.5	534*216*145
HJ-030	3	140	520	40	780*395*195

Mechanical Steel Jack

机械千斤顶



The mechanical steel jack is design by mechanical transmission principle. It's one of the best lift tools used in repairing and supporting, etc. The lifting or lowering speed is controllable. Moreover, it overcomes the shortcoming of the common hydraulic jacks whose lowering height and speed is out of control when oil leaking. The top-quality all steel structure makes it safe and durable. The compact design with collapsible lever offers easy operation and simple maintenance. It has two applicable supports stands. The lifting range is much higher.
机械千斤顶是根据机械传动原理设计的。它是用于维修和支撑等方面的最佳起重工具之一。升降速度可控。克服了普通液压千斤顶在漏油时下降高度和速度失控的缺点。优质全钢结构，安全耐用。紧凑的设计与可折叠的杠杆提供了简单的操作和维修。两个适用的支架。升降范围要高得多。

Features产品特点

- 所有千斤顶都经过25%过载测试**
All jacks are test with 25% overload
- 固定爪设备**
Equipment with fixed claw
- 折叠处理**
Folding handle

Advantages产品优势

- 齿轮轴两端采用钢套，减少轴磨损，延长产品寿命。**
Gear shaft at both ends of steel sleeve, reduce shaft wear and extend product life.
- 超级高质量的设计。**
Super high-quality design.
- 锻造手柄、齿轮零件、轴承座，确保操作要求高强度。**
Forged handle, gear parts, bearing seat to ensure operational requirements of high strength.
- 经过热处理的优质钢齿条保证长期使用。**
After the heat treatment of high-quality steel rack ensure long-term use.
- 底板带孔，架入孔内，上下两侧焊接。**
Base plate with hole, rack into the hole, up and down both sides of the weld.

Technical Parameters性能参数表

Model型号	SJ-1.5	SJ-3	SJ-5	SJ-10	SJ-16	SJ-20	SJ-25	SJ-3Q	SJ-5Q	SJ-10Q	
Rated capacity(T)载重	1.5	3	5	10	16	20	25	3	5	10	
Test load(KN)安全载荷	18.4	36.8	61.3	122.5	196	245	306	36.8	61.3	122.5	
Hand shake to lift full load(N)手摇满载拉力	140	196	235	431	580	650	750	196	235	431	
Dimensions (mm)尺寸	A	77	83	105	120	153	153	153	83	105	
	B	100	130	140	140	150	150	198	130	140	
	C	605-905	720-1075	735-1065	795-1155	790-1105	840-1155	950-1360	720-1075	735-1065	795-1155
	D	55-355	55-410	60-390	70-430	90-405	90-405	110-520	55-410	60-390	70-430
	E	55	60	70	80	85	85	85	60	70	80
	F	40	45	68	73	90	90	90	45	68	73
	G	110	138	175	175	182	182	230	138	175	175
	H	225	285	285	330	360	360	360	285	285	330
	K	121	200	190	252	275	275	388	200	190	252
	R	119	140	155	185	224	224	200	140	155	185
S	185	230	220	220	202	202	205	230	220	220	
T	126	126	126	250	250	250	250	126	126	250	
N.W.(kg)净重	10.7	21.3	27	47	72	72	93	16.6	22.2	37	

Screw Jack TY Series

螺旋千斤顶TY型



Features产品特点

- 1 球墨铸铁材质
Ductile iron material
- 2 一体成型机身，保证机身稳定性
Integrated body to ensure the stability of the body
- 3 钢制顶盘坚硬无比
Steel roof is extremely hard
- 4 上下底盘均采用高强度钢铸材质
The upper and lower chassis are made of high strength steel
- 5 精磨套筒
Fine grinding sleeve
- 6 采用45#不锈钢锰钢，经久耐用
Adopt 45# stainless manganese steel, durable

Technical Parameters性能参数表

Model 型号	Capacity (t)载重	Min.H. (mm) 最低高度	Lifting.H. (mm) 提升高度	N.W(kg) (cm)净重	Qty/Ctn (pcs) 每箱数量	Packing size (mm)包装尺寸	20'FCL (pcs) 每柜数量
TY3.2	3.2	220	110	4.9	4	535x260x160	4400
TY5	5	250	130	6.4	4	550x287x180	3400
TY8	8	260	140	6.5	4	550x287x180	3500
TY10	10	280	150	8.6	3	510x315x195	2550
TY16	16	320	180	11.9	3	560x365x225	1800
TY20	20	325	180	12.5	3	560x365x225	1800
TY25	25	275	130	11.1	3	445x420x235	1900
TY32	32	395	200	20.1	2	490x325x265	1100
TY50	50	452	250	36.2	1	500x390x310	610
TY100	100	452	200	71.7	1	500x287x180	300
TY200	200	272	200	130	1	570x490x420	170

Screw Jack TYD Series

螺旋千斤顶TYD型



Features产品特点

- 1 Pure copper gear纯铜齿轮
Wear - resistant, greatly extend the service life, enhance the quality of work
超耐磨，大幅度延长使用寿命，增强工作质量性
- 2 Spheroidal ink cast iron球墨铸铁皮
Ensure the top body structure is stable, wear-resisting and guaranteed
保证顶身结构稳定，耐磨，有保障
- 3 Lifting sleeve升降套筒
Can be cut off manually at the same time the brake, ensure the lifting of the brake in time
可在手动切断的同时刹车，保证升降的刹车及时
- 4 Ratchet group棘轮组
High temperature quenching treatment, ratchet tight bite, easy to use
高温淬火处理，棘轮咬合严密，脱齿轮使用方便



Technical Parameters性能参数表

Model 型号	Capacity (t)载重	Min.H. (mm) 最低高度	Lifting.H. (mm) 提升高度	N.W(kg) (cm)净重	Qty/Ctn (pcs) 每箱数量	Packing size (mm)包装尺寸	20'FCL (pcs) 每柜数量
TYD10	10	220	75	5.9	4	550x287x180	3700
TYD20	20	225	90	10.2	3	560x365x225	1800
TYD32	32	320	180	17.7	2	445x370x215	1240
TYD50	50	330	150	29.2	1	380x360x270	720

Economic Manual Geared Trolley

桃型手拉跑车



● Features产品特点

- 1 重型施工，质量上乘。
Heavy duty construction with premium quality.
- 2 活动轮中的密封滚珠轴承。
Heavy duty construction with premium quality.
- 3 配有防跌落板，以提高安全性。
Fitted with anti-drop plates for improved safety.
- 4 锻钢活动轮。铸造轮选项。
Forged steel moving wheel. Casting wheel option.
- 5 配置可选缓冲胶块
Equipped with the optional buffer rubber blocks

● Technical Parameters性能参数表

Model 型号	I-beam width (mm)工字钢	Net weight (kg)净重	A	B	C	D
1	75-125	14	206	231	120	123
2	100-150	23.5	241	271	155	125
3	100-150	33.5	261	311	185	132
5	125-175	53.5	294	351	220	175
10	150-175	101	294	721	165	190

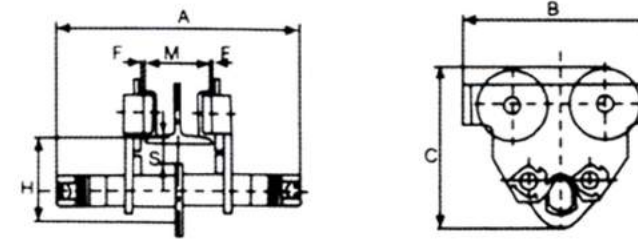
Economic Manual Plain Trolley

桃型手推跑车



● Features产品特点

- 1 高质量的重型结构。
Heavy duty construction with premium quality.
- 2 密封滚珠轴承在移动轮上。
Sealed ball bearing in the moving wheel.
- 3 可选配缓冲橡胶块
Equipped with the optional buffer rubber blocks
- 4 锻钢移动轮。采用锻造工艺。
Forged steel moving wheel. Casting wheel option.



● Technical Parameters性能参数表

Capacity T 容量	I-beam width (mm)工字钢宽度	Net weight (kg)净重	A	B	C	D
0.5	75-125	6	206	174	120	106
1	75-125	10	206	231	120	123
2	100-150	18.5	241	271	155	125
3	100-150	26	261	311	185	132
5	125-175	44	294	351	220	175
10	150-175	96	294	721	165	190

TY-E2 Anti-Collision Manual Geared Trolley

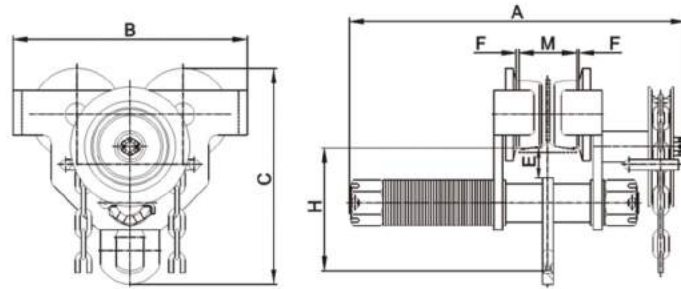
TY-E2型手拉单轨行车



● Features产品特点

齿轮小车由手拉链条手动操作，运行在单轨列车的下翼缘上。广泛应用于工厂、矿山、码头、码头、仓库、机房等设备安装和货物运输。特别适用于没有电源供应的地方进行设备的维护和维修。

The geared trolley is hand-operated by pulling the hand-chain, running on the bottom flange of monorail. They are widely used in factories, mines, wharves, docks, warehouses and engine rooms for installation of equipment and conveyance of goods. They are especially suitable for maintenance and repairing of equipment in places where no power supply is available.



● Technical Parameters性能参数表

Model型号	1t	2t	3t	5t	10t		
Rated capacity(t)载重	1	2	3	5	10		
Test load(kN)试验载荷	12.5	25	37.5	62.5	125		
Running height(m)提升高度	3						
Chain pull to lift full load(N)满载时拉力	44	80	65	90	195		
Min. radius of curve(m)最小转弯半径	1	1.1	1.3	1.4	1.7		
Dimensions (mm)尺寸	A	Pylon	390	400	430	444	489
		Lengthen pylon	492	502	532	544	584
	B	260	300	345	390	470	
	C	239	286	336	393	500	
	E	32.5	31	35	37	45	
	F	≈3					
Beam width (mm)工字钢	M	Pylon	136	161	185	220	280
		Lengthen pylon	64~132	88~203	102~203	114~203	125~203
Extra weight per meter of extra lift(kg)每增加1米提升	≈1						
Net weight(kg)净重	Pylon	Lengthen pylon	19.9	28.5	46	57	103
		Lengthen pylon	21.1	30.6	49.8	60.8	108.5

TY-Y4 Anti-Collision Manual Geared Trolley

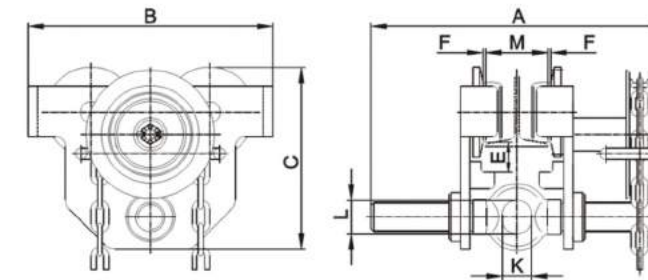
TY-Y4型手拉单轨行车



● Features产品特点

齿轮小车由手拉链条手动操作，运行在单轨列车的下翼缘上。广泛应用于工厂、矿山、码头、码头、仓库、机房等设备安装和货物运输。特别适用于没有电源供应的地方进行设备的维护和维修。

The geared trolley is hand-operated by pulling the hand-chain, running on the bottom flange of monorail. They are widely used in factories, mines, wharves, docks, warehouses and engine rooms for installation of equipment and conveyance of goods. They are especially suitable for maintenance and repairing of equipment in places where no power supply is available.



● Technical Parameters性能参数表

Model型号	0.5t	1t	2t	3t	5t		
Rated capacity(t)载重	0.5	1	2	3	5		
Test load(kN)试验载荷	6.25	12.5	25	37.5	62.5		
Running height(m)提升高度	3						
Chain pull to lift full load(N)满载时拉力	45	55	100	75	120		
Min. radius of curve(m)最小转弯半径	0.9	1	1.2	1.3	1.4		
Dimensions (mm)尺寸	A	Pylon	292	300	314	350	359
		Lengthen pylon	377	385	395	409	414
	B	225	252	300	360	392	
	C	173	188	226	289	313	
	E	33	31	32	46	47	
	F	≈3					
	K	25	30	40	48	60	
	L	30	35	47	58	70	
Beam width (mm)工字钢	M	Pylon	50~220	58~220	66~220	74~220	90~220
		Lengthen pylon	160~305	160~305	160~305	160~305	160~305
Extra weight per meter of extra lift(kg)每增加1m提升	≈1						
Net weight(kg)净重	Pylon	Lengthen pylon	11.4	14.7	21.8	36.7	48.5
		Lengthen pylon	11.8	15.2	22.6	37.9	50

TY-E2 Anti-Collision Manual Plain Trolley

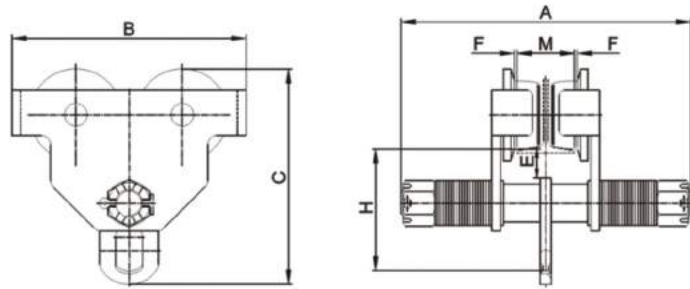
TY-E2型手推单轨行车



● Features产品特点

在单轨列车的下翼缘上运行的平板车是通过推动小车所起的载荷来移动的。广泛应用于工厂、矿山、码头、码头、仓库、机房等设备安装和货物运输。特别适用于没有电源供应的地方进行设备的维护和维修。

The plain trolley is moved by pushing the load lifted by the trolley, running on the bottom flange of monorail. They are widely used in factories, mines, wharves, docks, warehouses and engine rooms for installation of equipment and conveyance of goods. They are especially suitable for maintenance and repairing of equipment in places where no power supply is available.

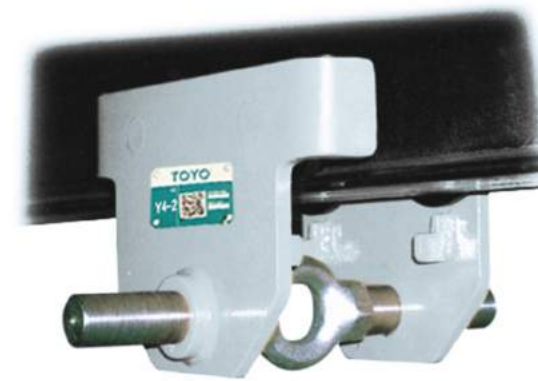


● Technical Parameters性能参数表

Model型号	0.5t	1t	2t	3t	5t	10t		
Rated capacity(t)载重	0.5	1	2	3	5	10		
Test load(kN)试验载荷	6.25	12.5	25	37.5	62.5	125		
Min. radius of curve(m)最小转弯半径	0.9	1	1.1	1.3	1.4	1.7		
Dimensions (mm)尺寸	A	Pylon	264	335	353	371	393	436
		Lengthen pylon	315	437	455	473	490	532
	B	216	260	300	345	390	470	
	C	195	239	286	336	393	500	
	E	31	32.5	31	35	37	45	
	F				≈3			
	K	110	136	161	185	220	280	
Beam width (mm)工字钢	M	Pylon	64-152	64-203	88-203	102-203	114-203	125-203
		Lengthen pylon	82-203	102-305	102-305	102-305	108-305	117-305
Net weight(kg)净重		Pylon	8.6	15.4	23	40	50	97
		Lengthen pylon	9.2	16.6	25.1	43.8	53.8	102.5

TY-Y4 Anti-Collision Manual Plain Trolley

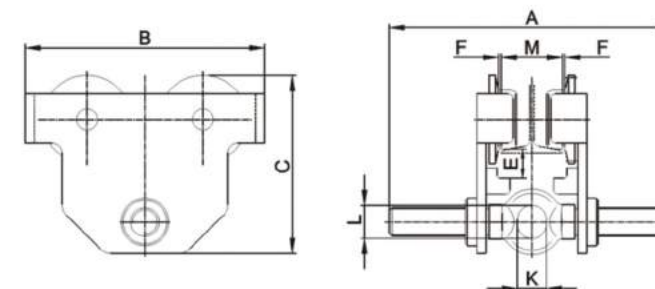
TY-Y4型手推单轨行车



● Features产品特点

平板车是在单轨列车的下翼缘上，通过牵引小车所起的载荷来移动的。广泛应用于工厂、矿山、码头、码头、仓库、机房等设备安装和货物运输。特别适用于没有电源供应的地方进行设备的维护和维修。

The plain trolley is moved by pulling the load lifted by the trolley, running on the bottom flange of monorail. They are widely used in factories, mines, wharves, docks, warehouses and engine rooms for installation of equipment and conveyance of goods. They are especially suitable for maintenance and repairing of equipment in places where no power supply is available.

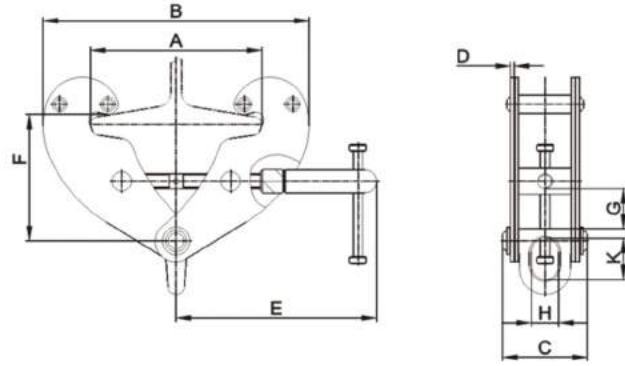


● Technical Parameters性能参数表

Model型号	0.5t	1t	2t	3t	5t		
Rated capacity(t)载重	0.5	1	2	3	5		
Test load(kN)试验载荷	6.25	12.5	25	37.5	62.5		
Min. radius of curve(m)最小转弯半径	0.9	1	1.2	1.3	1.4		
Dimensions (mm)尺寸	A	Pylon	292	300	310	324	329
		Lengthen pylon	377	385	395	409	414
	B	225	252	300	360	392	
	C	173	188	226	289	313	
	E	33	31	32	46	47	
	F			≈3			
	K	25	30	40	48	60	
	L	30	35	47	58	70	
Beam width (mm)工字钢	M	Pylon	50-220	58-220	66-220	74-220	90-220
		Lengthen pylon	160-305	160-305	160-305	160-305	160-305
Extra weight per meter of extra lift(kg)每增加1m提升			≈1				
Net weight(kg)净重		Pylon	8.2	10.3	17.5	30.7	42.4
		Lengthen pylon	8.6	10.8	18.3	31.9	43.9

TY-Q1 Girder Clamp

TY-Q1型螺旋夹持器



● Features产品特点

1~10t的TY-Q1梁卡箍是安全可靠的，尤其适用于低剖面的固定梁。而且它们也很容易使用，因为它们可以无级调节来夹紧不同宽度的梁。

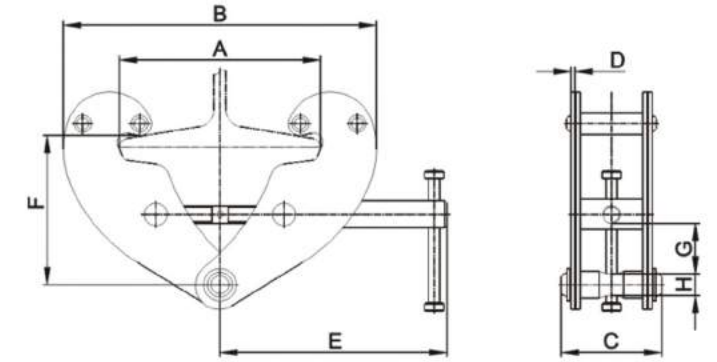
TY-Q1 Girder Clamps from 1t to 10t are safe, reliable, especially suitable for fixed girders in buildings with low profile. And they are also easy to use because they can be adjusted steplessly to clamp girders with different width.

● Technical Parameters性能参数表

Model型号	1t	2t	3t	5t	10t		
Rated capacity(t)载重	1	2	3	5	10		
Test load(kN)试验载荷	12.5	25	37.5	62.5	125		
Adjustable Beam Width(mm)适合工字钢	75~230	75~230	80~320	80~320	90~320		
Dimensions (mm)尺寸	A max	240	240	330	330	330	
	B	min	192	192	243	243	259
		max	367	367	491	491	501
	C	94	102	132	142	180	
	D	4	6	8	10	12	
	E	218	218	258	258	293	
	F	min	103	103	157	157	175
		max	155	155	223	223	235
	G	20	20	47	47	56	
	H	30	30	45	45	64	
K	45	45	63	63	95		
Net weight(kg)净重	4.2	5.1	10.4	12.2	18.8		

TY-Q4 Girder Clamp

TY-Q4型螺旋夹持器



● Features产品特点

TY-Q4型1t - 10t梁卡箍安全可靠，特别适用于低型材建筑中的固定梁。而且它们也很容易使用，因为它们可以无级调节来夹紧不同宽度的梁。

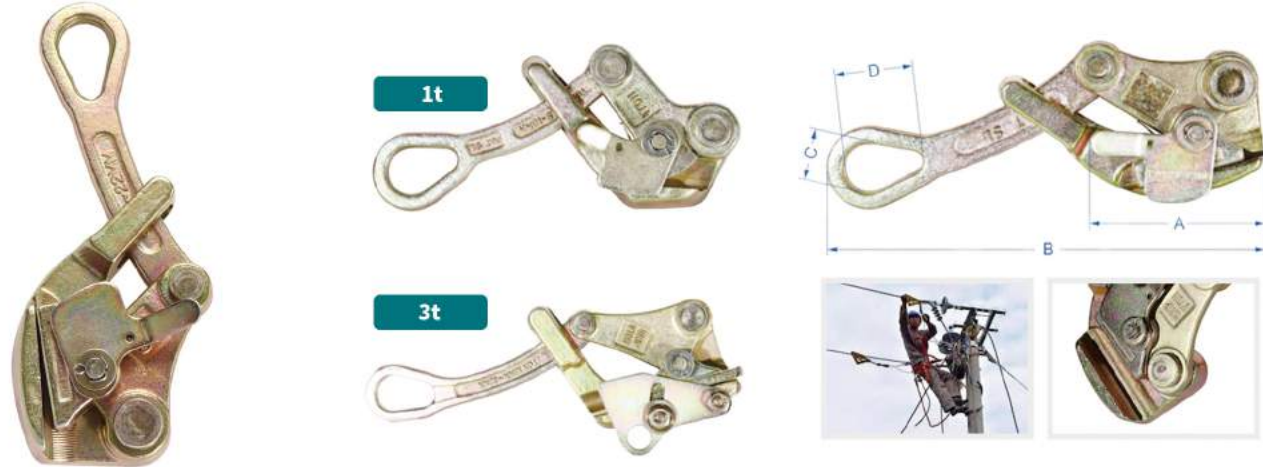
TY-Q4 Girder Clamps from 1t to 10t are safe, reliable, especially suitable for fixed girders in buildings with low profile. And they are also easy to use because they can be adjusted steplessly to clamp girders with different width.

● Technical Parameters性能参数表

Model型号	1t	2t	3t	5t	10t		
Rated capacity(t)载重	1	2	3	5	10		
Test load(kN)试验载荷	12.5	25	37.5	63	125		
Adjustable Beam Width(mm)适合工字钢	75~230	75~230	80~345	80~345	80~350		
Dimensions (mm)尺寸	A max	240	240	355	355	360	
	B	min	192	192	243	243	272
		max	367	367	520	520	532
	C	94	102	132	142	180	
	D	4	6	8	10	12	
	E	194	194	241	241	284	
	F	min	102	102	133	133	155
		max	154	154	223	223	234
	G	20	20	47	47	56	
	H	30	30	45	45	64	
Net weight(kg)净重	4	4.8	9.8	11.6	17		

TY Japanese Cable Clamp Wire Rope Grip

TY型日式夹线器



● Technical Parameters性能参数表

Model型号	Rated Load (T)载重	Grip Range(mm)开口规格	Sizes(mm)主要尺寸				Net Weight(KG)净重
			A	B	C	D	
TY-1	1T	2.5-26	71	189	25	37	0.75
TY-2	2T	4-22	91	248	25	42	1.4
TY-3	3T	16-32	129	296	30	50	2.5

TY American Cable Clamp Wire Rope Grip

TY型美式夹线器



● Technical Parameters性能参数表

Model型号	Rated Load (T)载重	Grip Range(mm)开口规格	Sizes(mm)主要尺寸				Net Weight(KG)净重
			A	B	C	D	
TY -0.5	0.5T	1-100	55	131	16	16	0.4
TY-1	1T	4-14	50	110	26	43	1.33
TY-2	2T	7-20	66	128	29	49	1.65
TY-3	3T	16-32	83	160	29	49	2.74

Ratchet Wire Rope Cable Hand Puller

棘轮日式收线器



● Technical Parameters性能参数表

Model型号	Rated Load (T)载重	Diameter x Length (mm)钢索直径x长度	Sizes(mm)尺寸	Net Weight(KG)净重
TY-1000	1T	Φ5x2400	560	3.3
TY-2000	2T	Φ6x2400	620	4.5
TY-3000	3T	Φ7x2400	700	5.62
TY-4000	4T	Φ7x2400	700	6.52
TY-JP2000	2T	Φ6x2400	620	4.8
TY-ZD2000	2T	Φ450x10000	620	5.0
TY-ZD2000F	1.5T-2T	Φ450x10000	620	5.3

Aluminum & Magnesium Alloy Cable Clamp Wire Rope Grip

铝镁合金导线卡线器



● Technical Parameters性能参数表

Model型号	Applicable Wire(LGJ)适用导线	Rated Load(KN)额定负荷	Maximum Opening(mm)开口	Net Weight(KG)净重
TY-1	25-70	10	14	1.05
TY-2	95-120	15	18	1.40
TY-3	150-240	25	24	2.90

Easily operated Cable Clamp Wire Rope Grip

双桃地跳卡线器



● Technical Parameters性能参数表

Model型号	Applicable Wire(LGJ)适用导线	Rated Load(KN)额定负荷	Maximum Opening(mm)开口	Net Weight(KG)净重
TY-1	25-50	10	11	1.9
TY-2	50-70	20	13	2.4
TY-3	70-120	30	15	3.5

Hand winch with hook wire rope

带钩钢丝绳手摇绞车



● Technical Parameters性能参数表

Model型号	Rated load (KG) 载荷	Breaking load (KG) 砍断强度	Diameter and length (mm)钢丝绳直径与长度	Gear ratio齿轮比	Weight (KG) 重量	Packing Quantity 装箱数量
TY-800	362	544	φ4.5mm*10m	3:2:1	31.5	12
TY-1200	540	810	φ4.8mm*10m	4:1:1	30.2	8
TY-1600	720	1080	φ5.0mm*10m	4:1	30.7	6
TY-1800	800	1200	φ5.0mm*10m	4:1/8:1	22.8	4
TY-2500	1100	1650	φ5.6mm*10m	4:1/8:1	22.4	4

Hand winch with belt

织带手摇绞车



● Technical Parameters性能参数表

Model型号	Rated load (KG) 载荷	Breaking load (KG) 砍断强度	Diameter and length (mm)钢丝绳直径与长度	Gear ratio齿轮比	Weight (KG) 重量	Packing Quantity 装箱数量
TY-800	350	525	50mm*6m	3:2:1	25.62	12
TY-1200	550	825	50mm*10m	4:1:1	25.12	8
TY-1600	700	1050	50mm*10m	4:1	23.04	6
TY-1800	800	1200	50mm*10m	4:1/8:1	20.6	4
TY-2000	900	1350	50mm*10m	4:1/8:1	21.42	4
TY-2500	1100	1650	50mm*10m	4:1/8:1	21.42	4

Hand winch without steel wire rope or color belt

无钢丝绳无织带手摇绞车



● Technical Parameters性能参数表

Model型号	Rated load (KG) 载荷	Breaking load (KG) 砍断强度	Gear ratio齿轮比	Weight (KG) 重量	Packing Quantity 装箱数量
TY-800	350	525	3:2:1	21.5	12
TY-1200	550	825	4:1:1	17.4	8
TY-1600	700	1050	4:1	20.1	6
TY-1800	800	1200	4:1/8:1	17	4
TY-2000	900	1350	4:1/8:1	17	4
TY-2500	1100	1650	4:1/8:1	17.8	4

TY Brake Hand Winches

TY附刹车手摇绞盘



Features产品特点

- 1 采用优质碳钢，特殊热处理。重量轻，携带方便，经久耐用。**
High quality carbon steel, special heat treatment. Light weight, portable and durable.
- 2 自动制动，随时松开手柄，负载保持所需位置，增加安全系数，避免危险坠线坠物。**
Automatic braking, at any time to release the handle, load to keep the location of the required, increase the safety factor, avoid dangerous fall line falling objects.
- 3 摩擦制动装置，柔性制动器，负载箱，自动开启双制动，升降自锁。**
(3)Friction braking device, flexible brakes, load cases, automatically open double brake, lifting self-locking.
- 4 提供静电镀膜、电镀锌、不锈钢等款式。**
Provide electrostatic coating, electric galvanized, stainless steel and other styles.



Technical Parameters性能参数表

Model型号	TY-1200	TY-1800	TY-2600	
Rated Load(LB)载重	1200	1800	2600	
Test Load(KN)试验载重	8	12	17.5	
Speed Ratio速比	4.2:1	5.0:1	10.0:1	
Sizes(mm)尺寸	A	182	244	292
	B	156	200	214
	C	88	108	128
	D	288	292	318
	E	51	56	60
	F	204	312	312
	G	109	109	109
	H	32	32	32
Net Weight(KG)净重	3.8	8.1	10.3	

TY-CE Hand Winch

TY-CE重型绞盘

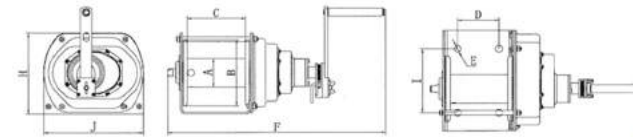
TY-CE手摇绞车是一种新型的手动绞车。与其他绞车相比，它操作方便，使用范围更广。主要用于越野车、农用车、游船等特殊车辆。它是车辆、船只的自保和牵引装置，也可用于雪原、沼泽地、沙漠、海滩、泥地等恶劣环境的自救。可用于清除障碍物、牵引物料和安装。它是矿山、环保、林业、交通、消防等野外必要的安全设备。

TY-CE Hand Winch is a new model of manual winch. Compared with other winches, it is more convenient in use, more easy in operation and more widely use. It is mainly applied for cross country vehicle, agriculture vehicle, pleasure boat and other special vehicle. It is the device of self-protection and pulling of vehicles and boats, and also may be used for saving in snowfield, marshland, desert, sea beach, muddy patch and other adverse circumstances. It may be operated for clearing away obstacles, pulling material and installation. It is the necessary safe device of mine, environment protection, forestry, transportation, fire fighting and other open field.



Features产品特点

- 1 采用杠杆手柄，既可沿整个圆周摆动操作，也可在圆周的任意位置任意角度摆动操作。它在狭窄的道路上有独特的优势。**
Adopting lever handle, either may shake operation along the whole circle, or may swing operation at any angle in the any position of circle. It has unique advantage in the narrow space.
- 2 齿轮箱和制动机构采用密封结构设计，避免异物进入齿轮箱和制动机构。**
The gear box and braking mechanism are designed with sealed structure to avoid foreign matter entering the gear box and braking mechanism.
- 3 制动材料采用环保材料制成。**
The braking material is made of environment material.
- 4 新型制动爪更好地保证制动的稳定性。**
The new brake paw for more better ensuring the stability of braking.
- 5 自由调节手柄长度。**
Adjust the length of Handle freely.
- 6 棘轮足够大，可以容纳更多的钢丝绳，更适合深井作业和长距离高拉拔作业。**
The ratchet is big enough to contain more wire rope and more suitable for the operation in deep well and drawing of long distance.



Technical Parameters性能参数表

Model型号	0.5T	1T	2T	3T	
Rated Load(LB)载重	0.5	1	2	3	
Test Load(KN)试验载重	6.125	12.25	24.5	36.75	
Wire Rope dia.(mm)x length(m)钢丝绳直径x长度	Ø6.4 x 40	Ø8 x 40	Ø9 x 40	Ø12.5 x 40	
Speed Ratio速比	4.33:1	12.19:1	22.68:1	29.16:1	
Max. Length of link-pole action(mm)连杆作用最大长度	350	350	350	350	
Min. Force of hand最小手扳力turn (N)	120	120	130	180	
Dimensions (mm)尺寸	A	Ø60	Ø76	Ø90	Ø100
	B	Ø140	Ø175	Ø190	Ø230
	C	150	154	195	205
	D	100	110	155	155
	E	Ø15	Ø18	Ø18	Ø18
	F	403	443	490	549
	H	182	214	230	296
	I	130	170	170	170
	J	245	266	300	265
	Net Weight(KG)净重	14.4	19.7	25.1	44.3

TYM Permanent Magnetic Lifter

TYM永磁吊装器

Product Advantages 产品优势



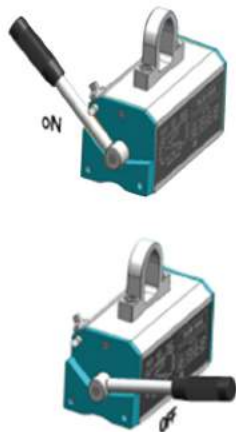
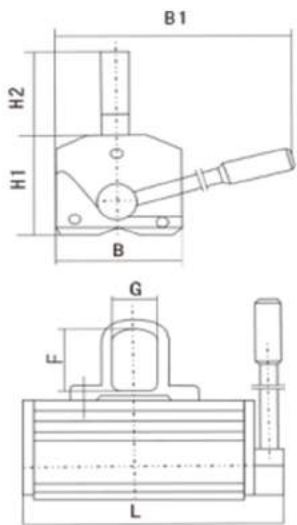
TYM型永磁吊装器主要用于起重搬运作业中连接部件。它们可以吊起移动的铁码头、圆柱形和其他磁性材料。操作简便，操作安全，结构轻巧巧妙。广泛应用于工厂、码头、仓库、运输等行业的起重设备。通过使用它们，你可以改善你的工作条件，提高你的工作效率。

Permanent Magnetic Lifters Model TYM is mainly used for connecting component during lifting and handing operation. They can hoist moving iron docks, cylindrical and other magnetic material. They are easy for operation, safe in handing, lightly and ingeniously structured. Hence they are widely used as hoisting devices in factories, docks warehouses and transportation industries. By using them, you can improve your working conditions and increase your working efficiency.

Features 产品特点

TYM永磁吊装器采用钕铁硼磁性材料制成，具有较强的磁路。通过转动手动喷嘴来控制磁通的通断。磁悬浮提升机顶部有卸扣用于提升，在保持圆柱形部件上有V形槽。

TYM Permanent Magnetic Lifter has strong magnetic path produced by NdFeB magnetic materials. On and off the magnetic path is controlled by turning the manual nozzle. There are shackles on the top of Magnetic Lifting Hoist for lifting, a V slot on the holding cylindrical component.



Technical Parameters 性能参数表

Model 型号	Rated lifting strength (kg) 额定起重重量	Sizes(mm) 尺寸							Dead Weight (kg) 净重
		L	B	H1	H2	B1	F	G	
TYM -100	100	137	62	66	45	145	31.5	21	4.2
TYM -300	300	199	90	95	68	230	50	38	10.8
TYM -600	600	263	115	107	78	290	58	42	21.2
TYM -1000	1000	303	150	140	88	360	64	50	42
TYM -1500	1500	348	166	156	102	450	76	56	61.4
TYM -2000	2000	394	175	170	102	460	76	56	79.4

Model 型号	Load Plate Max (Kg) 额定起重重量	Load Round Max (Kg) 最大圆载重量	Plate Min Thickness (mm) 最小厚度	Round Min-Max Thickness (mm) 圆载最小-最大厚度	Work Max. length (mm) 最大长度	Operation temperature (°C) 操作温度
TYM -100	100	50	15	25-60	1500	<80
TYM -300	300	150	20	50-100	1500	<80
TYM -600	600	300	30	100-180	2000	<80
TYM -1000	1000	500	40	150-350	2500	<80
TYM -1500	1500	700	50	150-380	3000	<80
TYM -2000	2000	1000	60	180-450	3500	<80

L Horizontal Lifting Clamp

L型横吊起重钳

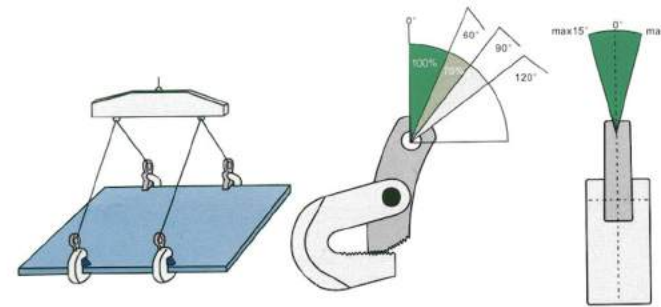
Features 产品特点

- 1 适用于水平位置的钢板、建筑型材、型材的吊装运输。
To avoid possible personal injury or damage to equipment
- 2 采用优质碳钢制造。
Manufactured from high quality carbon steel.
- 3 避免抓斗或冲击负荷。
Avoid snatch or shock loading.
- 4 工作负荷极限是允许夹头以60°升角成对使用时所能承受的最大负荷。在起重作业中，夹钳可以成对或多次使用。

The working load limit is the maximum load that the clamp are authorized to support when used in pairs with a lift angle of 60°. In lifting operations the clamps can be used in pairs or multiples.

- 5 主体和部件由模锻特殊合金钢制成，经过最佳回火处理，达到最大强度和耐久性。

The main body and parts are made from die-forge special alloy steels, which are optimally tempered for maximum strength and durability.



Technical Parameters 性能参数表

Model 型号	Load Capacity(t) 载重	Jaw Opening(mm) 开口	Weight(kg) 重量
L0.8	0.8	0-15	2
L1	1.0	0-20	4
L1.6	1.6	0-25	6.5
L2.5	2.5	0-30	11
L2.5(B)	2.5	25-50	11
L3.2	3.2	0-40	12.5
L3.2(B)	3.2	30-60	12.5
L5	5.0	0-50	19
L5(B)	5.0	50-80	20
L10	10.0	20-100	43

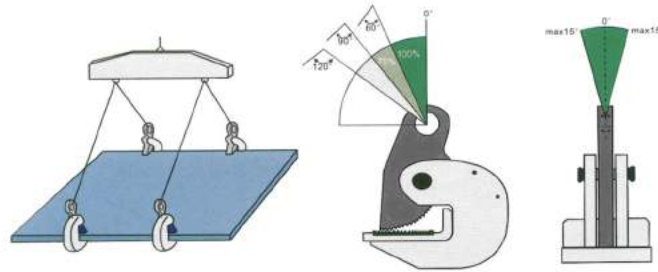
PDB Horizontal Lifting Clamp

PDB型横吊起重钳



● Features产品特点

- 1 适用于水平位置的钢板、建筑型材、型材的吊装运输。
To avoid possible personal injury or damage to equipment
- 2 采用优质碳钢制造。
Manufactured from high quality carbon steel.
- 3 避免抓斗或冲击负荷。
Avoid snatch or shock loading.
- 4 工作负荷极限是允许夹头以60°升角成对使用时所能承受的最大负荷。在起重作业中，夹钳可以成对或多次使用。
The working load limit is the maximum load that the clamp are authorized to support when used in pairs with a lift angle of 60°. In lifting operations the clamps can be used in pairs or multiples.
- 5 主体和部件由模锻特殊合金钢制成，经过最佳回火处理，达到最大强度和耐久性。
The main body and parts are made from die-forge special alloy steels, which are optimally tempered for maximum strength and durability.



● Technical Parameters性能参数表

Model型号	Load Capacity(t)载重	Jaw Opening(mm)开口	Weight(kg)重量
PDB0.8	0.8	0-25	2.5
PDB1	1.0	0-30	3.5
PDB1.6	1.6	0-30	4
PDB2	2.0	0-40	5
PDB3.2	3.2	0-45	6
PDB4	4.0	0-50	6.5
PDB5	5.0	0-55	7.5
PDB6	6.0	0-65	10.5
PDB6(B)	6.0	0-130	22
PDB8	8.0	0-100	22
PDB10	10.0	0-125	33
PDB16	16.0	50-150	50
PDB30	30.0	100-270	108

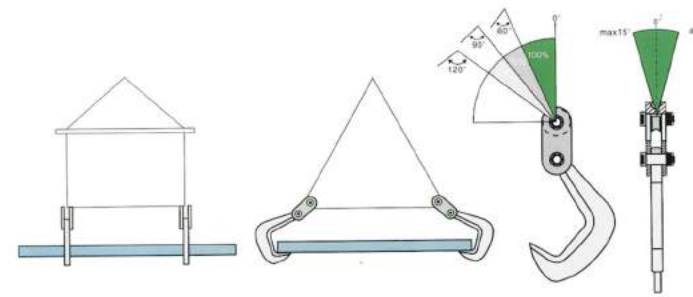
PDQ Single-Ply Plate Lifting Clamp

PDQ型横吊起重钳



● Features产品特点

- 1 适用于单板或多板的起重运输。
Suitable for lifting and transport single or multi steel plates.
- 2 采用优质碳钢制造。
Manufactured from high quality carbon steel.
- 3 避免抓斗或冲击负荷。吊杆必须使用。
Avoid snatch or shock loading. Lifting beam must be in use.
- 4 吊钩头部的滚轮不会损坏吊索。
The roller at the head of the hook will not damage the sling rope.
- 5 工作负荷极限是允许夹头以60°升角成对使用时所能承受的最大负荷。在起重作业中，至少必须始终使用四个夹具。
The working load limit is the maximum load that the clamp are authorized to support when used in pairs with a lift angle of 60°. In lifting operations four clamps must at least always be used.
- 6 自动卸载。
Automatic unloading.



● Technical Parameters性能参数表

Model型号	Load Capacity(t)载重	Jaw Opening(mm)开口	Weight(kg)重量
PDQ1	1.0	0-50	3
PDQ2	2.0	0-60	5
PDQ3.2	3.2	0-90	12
PDQ5	5.0	0-120	17
PDQ8	8.0	0-130	25
PDQ10	10.0	0-150	30
PDQ12	12.0	0-150	32
PDQ20	20.0	0-250	69

QS Double-Ply Plate Lifting Clamp

QS型双钢板起重钳



● Features产品特点

- 1 适用于单板或多板的起重运输。适用于“H”、“I”、“T”、“L”形结构钢和钢板的水平升降夹具。

Clamp for the horizontal lifting of "H", "I", "T", "L" shaped structured steel and plate steel.

- 2 采用优质碳钢制造。

Manufactured from high quality carbon steel.

- 3 避免抓斗或冲击负荷。

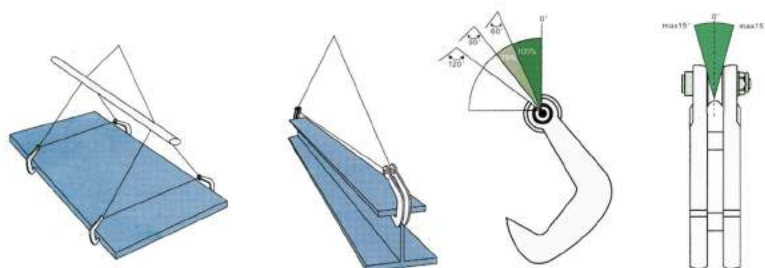
Avoid snatch or shock loading.

- 4 工作负荷极限是允许夹头以60°升角成对使用时所能承受的最大负荷。在起重作业中，夹钳可以成对或多次使用。

The working load limit is the maximum load that the clamp are authorized to support when used in pairs with a lift angle of 60°. In lifting operations the clamps can be used in pairs or multiples.

- 5 当插入一个小间隙时，锋利的钩点是有效的。

The sharp hook point is effective when inserting into a small clearance.

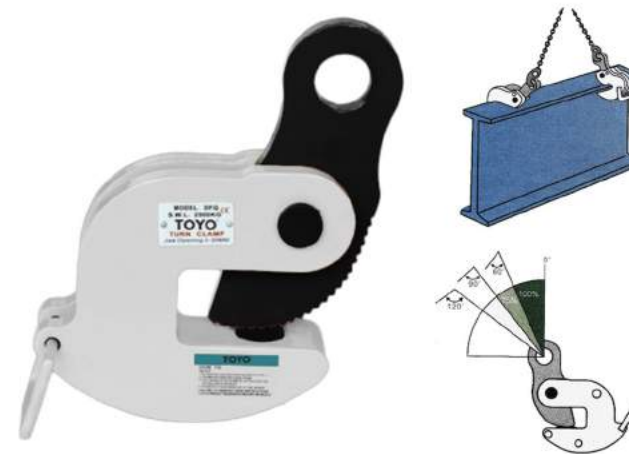


● Technical Parameters性能参数表

Model型号	Load Capacity(t)载重	Jaw Opening(mm)开口	Weight(kg)重量
QS1	1.0	0-40	2
QS2	2.0	0-50	3.5
QS3.2	3.2	0-60	6
QS5	5.0	0-70	14.5
QS7	7.0	0-90	22

DFQ Turn Clamp

DFQ型翻转起重钳



● Features产品特点

- 1 用于提升和转动钢板。

For lifting and turn steel plate.

- 2 从力学的角度看，这些夹具设计理想，结构紧凑，重量轻，使用方便。

From a mechanics point of view, these clamps have ideal designs, which are compact, lightweight, easy to use.

- 3 工作负荷限制为一件式，举升时可单独用于水平举升和运输。

The working load limited is applied in one piece, during lifting single could be in use for horizontal lifting and transport.

● Technical Parameters性能参数表

Model型号	Load Capacity(t)载重	Jaw Opening(mm)开口	Weight(kg)重量
DFQ1.5	1.5	0-20	5
DFQ2.5	2.5	0-30	9
DFQ5	5.0	0-40	20
DFQ8	8.0	0-50	26
DFQ10	10.0	0-60	31
DFQ16	16.0	20-120	60
DFQ20	20.0	60-160	80

DFM Turn Clamp

DFM型模锻翻转起重钳



● Features产品特点

- 1 用于提升和转动钢板。

For lifting and turn steel plate.

- 2 主体和部件由模锻特殊合金钢制成，经过最佳回火处理，达到最大强度和耐久性。

The main body and parts are made from die-forge special alloy steels, which are optimally tempered for maximum strength and durability.

- 3 工作负荷限制为一件式，举升时可单独用于水平举升和运输。

The working load limited is applied in one piece, during lifting single could be in use for horizontal lifting and transport.

● Technical Parameters性能参数表

Model型号	Load Capacity(t)载重	Jaw Opening(mm)开口	Weight(kg)重量
DFM1	1.0	0-15	2.7
DFM2	2.0	0-20	5.6
DFM3	3.0	0-30	8
DFM5	5.0	0-60	13.4
DFM10	10.0	0-80	26

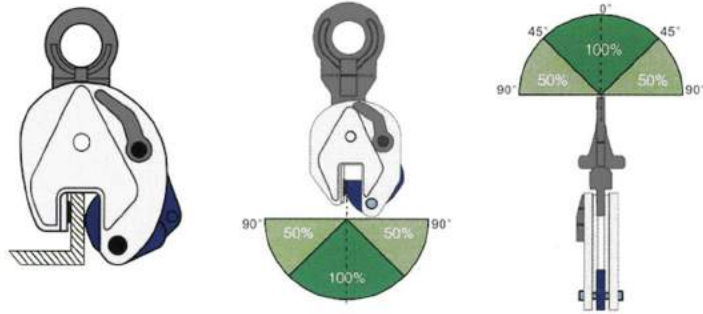
CD Vertical Lifting Clamp

CD型竖吊起重钳



● Features产品特点

- 1 用于从所有位置(水平方向)起吊和运输钢板和结构物。纵向和横向地。**
For lifting and transporting of steel plates and structures from all positions (horizontal. Vertical and sidelong).
- 2 铰接式升降卸扣(CD型)。**
Articulated lifting shackle (CD type).
- 3 卡箍配有安全机构, 确保卡箍在起升力作用和处于开启位置时不会打滑。**
Clamps are equipped with a safety mechanism, ensuring the clamp does not slip when lifting force is applied and when as in open position.
- 4 夹紧器既处于开启位置, 也处于关闭位置。**
The clamp is locked in closed as well as in open position.
- 5 采用优质碳钢制造。**
Manufactured from high quality carbon steel.



● Technical Parameters性能参数表

Model型号	Load Capacity(t)载重	Jaw Opening(mm)开口	Weight(kg)重量
CD0.8	0.8	0-15	2
CD1	1.0	0-15	4
CD1(B)	1.0	0-20	5
CD1.6	1.6	0-20	7
CD2	2.0	0-25	8
CD3.2	3.2	0-25	15
CD3.2(B)	3.2	0-30	15
CD5	5.0	0-30	21
CD5(B)	5.0	0-50	23
CD8	8.0	0-45	37
CD12	12.0	50-90	50
CD16	16.0	60-100	65
CD30	30.0	80-220	120

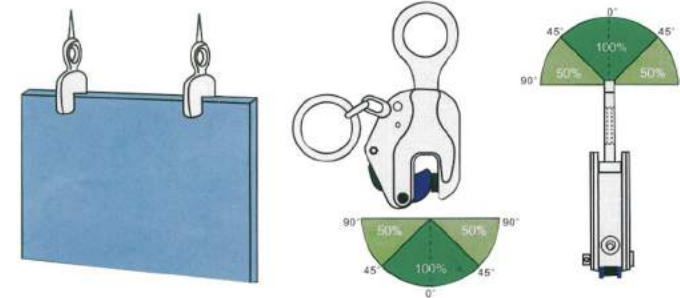
CDH Vertical Lifting Clamp

CDH型竖吊起重钳



● Features产品特点

- 1 钢板和钢结构垂直升降用标准设计夹具。弹簧紧固锁紧机构, 确保初始锁紧力为正。**
Standard design clamp for vertical lifting of steel plates and steel structures.' The spring-loaded tightening lock mechanism assures a positive initial clamping force.
- 2 卡箍配有安全机构, 确保卡箍在起升力和降低载荷时不打滑。**
Clamp are equipped with a safety mechanism,ensuring the clamp does not slip when lifting force is applied and when load is being lowered.
- 3 夹紧器既处于开启位置, 也处于关闭位置。**
The clamp is locked in closed as well as in open position.
- 4 高频淬火模具锻造的特殊合金钢使凸轮更耐用。**
High frequency quenching of die -forged special alloy steels gives greater durability to the cam.



● Technical Parameters性能参数表

Model型号	Load Capacity(t)载重	Jaw Opening(mm)开口	Weight(kg)重量
CDH0.8	0.8	0-16	2.8
CDH1	1.0	0-22	3.6
CDH2	2.0	0-30	5.5
CDH3.2	3.2	0-40	10
CDH5	5.0	0-50	17
CDH8	8.0	0-60	26
CDH10	10.0	0-80	32
CDH12	12.0	25-90	48
CDH16	16.0	60-125	80
CDH30	30.0	80-220	125

YQC Oil Drum Lifting Clamp

YQC型油桶钳



● Features产品特点

- 1 用于提升、搬运和运输(油桶), 使油桶处于水平位置。**
For lifting, handing and transporting of (oil)drums where the drum have to stay in a horizontal position.
- 2 从力学的角度看, 这些夹具设计理想, 结构紧凑, 重量轻, 使用方便。**
From a mechanics point of view, these clamps have ideal designs, which are compact, lightweight, easy to use.

● Technical Parameters性能参数表

Model型号	Load Capacity(t)载重	Jaw Opening(mm)开口	Weight(kg)重量
YQC0.6	0.6	0-30	5

SL Oil Drum Lifting Clamp

SL型双链油桶钳



● Features产品特点

- 1 用于钢(油)桶的安全吊装和运输。**
For safe lifting and transporting of steel (oil) drums.
- 2 SL钢卷筒夹头可以单独使用, 也可以每对使用。**
The SL steel drum clamps can be used single or per pair as well.
- 3 避免抓斗或冲击负荷。**
Avoid snatch or shock loading.
- 4 紧固在2支80级链条上。**
Clamps firmly on 2-leg Grade 80 chain ling.
- 5 这种夹头重量极轻, 使用方便快捷。**
This clamp is extremely light weight and very quick and easy to use.

● Technical Parameters性能参数表

Model型号	Load Capacity(t)载重	Jaw Opening(mm)开口	Weight(kg)重量
SL.1	1.0	0-25	3.6

JC Flat Webbing Sling

JC扁平吊装带



● Features产品特点

- 1 法律标准:JB/ T8521-2007。**
Legal standard: JB/ T8521-2007.
- 2 JC白带吊索是一种理想的吊索, 它具有宽而光滑的外形, 不会对受力物体造成损伤。**
JC white webbing sling is the ideal sling which has wide and smooth appearance no damage to the load objects.
- 3 耐无机酸、碱, 适用于油漆、塑料、管道防腐处理。**
Because it is resistant to mineral acids and alkali, it is suitable for paints plastics and pipes after anticorrosion
- 4 高强度抗酸、碱带吊索适用于化工、特别是电镀等行业的起重设备。**
The high tensile anti acids and alkalis webbing sling is used for lifting goods in chemical industry specially in electroplate.

● Technical Parameters性能参数表

Model 型号	Max.SWL=Mode Coefficient P x Working Load Limit 最大安全工作载荷=方式系数x额定载荷			Max.SWL Of Lifting Method 吊装方式最大安全工作载荷		
	Minimum Breaking Load (kg)最小破断载荷	Working Load Limit (kg)额定载荷	P=1(kg) Upright 垂直吊	P=0.8(kg) Choked 结套吊	P=1.8(kg) Angle45° 45°度吊	P=1.4(kg) Angle90° 90°度吊
JC-01	1000	v4000	1000	800	1800	1400
JC-02	2000	8000	2000	1600	3600	2800
JC-03	3000	12000	3000	2400	5400	4200
JC-04	4000	16000	4000	3200	7200	5600
JC-05	5000	20000	5000	4000	9000	7000
JC-06	6000	24000	6000	4800	10800	8400
JC-08	8000	32000	8000	6400	14400	11200
JC-10	10000	40000	10000	8000	18000	14000

JA Round Webbing Sling

JA圆形吊装带



● Features产品特点

1 圆吊索的最大载荷可达3000T, 有效长度可达100m, 通常采用的安全系数为7:1、6:1。

Legal standard: JB/ T8521-2007.

2 圆吊索是由高强工业纱线(100%PES)制成, 其内部的钢绞线是一种无止境的循环形式。外套管也是由100%聚醚砜(pes)制成, 不是为了装载, 而是为了保护里面的钢绞线。

2.Round sling is made of high tension industrial yarn(100%PES), the strands inside are as a form of endless cycle. The outside sleeve is also made of 100%PES, not for the loading, but to protect the strands inside.

3 圆形吊索是安全吊装货物的理想解决方案, 无论是在你的工作场所、装卸或在建筑工地使用。圆形吊索可以保护被吊起的物品。如果吊带损坏严重, 外套管会断裂, 内链会脱落, 所以吊带不能再使用了。其坚固的核心和覆盖层将确保长期使用寿命, 即使在连续使用的圆形吊索也是可修复的。

3.Round slings are the ideal solution for the safe lifting of loads, whether this is to be at your works, for loading and unloading or for using at a building site. The round slings will protect items being lifted. If the sling is damaged badly, the outside sleeve is breakage, and the inside strands will go out, so the sling can not use any more. Their sturdy core and a covering layer will guarantee a long serviceable life, even when in continuous use round slings are also repairable.

● Technical Parameters性能参数表

Mode 型号	Color 颜色	Single Max. Working Load Limit—根吊索正常载荷						2-Legs Max. Working Load Limit两根吊索正常载荷				Appro x Width (mm) 近似	Min. Length (m) 最小长度	Max. Length (m) 最大长度
		Upright 直吊拉力	Choked 结套拉力	v				Upright 45° 直吊拉力	Choked 45° 结套拉力	Upright 45°-60° 直吊拉力	Choked 45°-60° 结套拉力			
				0°-7°	7°-45°	45°-60°	45°							
		1.0	0.8	2.0	1.4	1.0	0.7	1.4	1.12	1.0	0.8			
JA-01	Purple紫色	1000	800	2000	1400	1000	700	1400	1120	1000	800	40	1	100
JA-02	Green绿色	2000	1600	4000	2800	2000	1400	2800	2240	2000	1600	50	1	100
JA-03	Yellow黄色	3000	2400	6000	4200	3000	2100	4200	3360	3000	2400	60	1	100
JA-04	Gray灰色	4000	3200	8000	5600	4000	2800	5600	4480	4000	3200	70	1	100
JA-05	Red红色	5000	4000	10000	7000	5000	3500	7000	5600	5000	4000	75	1	100
JA-06	Brown棕色	6000	4800	12000	8400	6000	4200	8400	6720	6000	4800	80	1	100
JA-08	Blue蓝色	8000	6400	16000	11200	8000	5600	11200	8960	8000	6400	90	1	100
JA-10	Orange橘色	10000	8000	20000	14000	10000	7000	14000	11200	10000	8000	100	1	100
JA-12	Orange橘色	12000	9600	24000	16800	12000	8400	16800	13440	12000	9600	110	1	100
JA-15	Blue蓝色	15000	12000	40000	28000	15000	10000	28000	22400	15000	12000	125	1	100
JA-20	Orange橘色	20000	16000	60000	42000	20000	14000	42000	33600	20000	16000	150	1	100
JA-25	Orange橘色	25000	20000	80000	56000	25000	17500	56000	44800	25000	20000	180	1	100
JA-30	Orange橘色	30000	24000	100000	70000	30000	21000	70000	56000	30000	24000	200	1	100
JA-40	Orange橘色	40000	32000	130000	94000	40000	28000	94000	75200	40000	32000	220	1	100
JA-50	Orange橘色	50000	40000	160000	118000	50000	35000	118000	94400	50000	40000	240	1	100
JA-60	Orange橘色	60000	48000	190000	141000	60000	42000	141000	112800	60000	48000	260	1	100
JA-80	Orange橘色	80000	64000	250000	188000	80000	56000	188000	150400	80000	64000	280	1	100
JA-100	Orange橘色	100000	80000	300000	226000	100000	70000	226000	180800	100000	80000	290	1	100

Ratchet Tie Down

捆绑带



● Technical Parameters性能参数表

Size:	2"
Handle Length:	196MM
Break Loading (Strenght):	5000KG/11000LBS
Handle:	Plastic
Ratchet Color:	Color Zinc Plated
Webbing:	Color: Color Zinc Plated
	Webbing Length: Blue/Yellow/Red/Orange Wide: 50M